

18 Honeysuckle Close, Glenning Valley, NSW 2261



Sold House

Thursday, 9 May 2024

18 Honeysuckle Close, Glenning Valley, NSW 2261

Bedrooms: 4

Bathrooms: 1

Parkings: 2

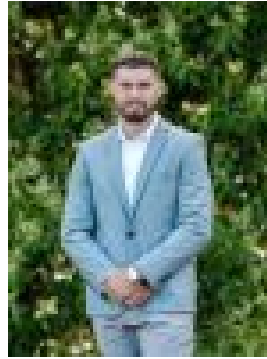
Area: 665 m2

Type: House



Ian Boyle

0243139043



Blair Ryan

0243139043

\$820,000

This delightful single-level home situated in a popular Glenning Valley Street features four bedrooms, a spacious kitchen, two-way bathroom with an open plan living/dining area. The single lock-up garage gives you easy access to the well-established yard with plenty of off-street parking. This home ticks all the boxes for first-home buyers, downsizers, or investors looking for a great rental return in a central sought-after location! All this home needs a spruce up and it's ready to go!

- Single level brick & tile home
- Four bedrooms all with built-ins
- Spacious Kitchen & Dining
- Two living spaces
- Private outdoor entertaining with a fenced backyard
- Lock up garage with off-street parking
- Air conditioning, NBN & Gas
- Side access to fully fenced backyard
- Two-way bathroom
- Close to public transport
- Great schools nearby

Short drive to the beach, Westfield Tuggerah, and the M1. Call Ian Boyle today on 0416 169 606 to arrange an inspection. Disclaimer: All information about the property has been provided to Ray White Berkeley Vale by third parties. Ray White Berkeley Vale has not verified the information and does not warrant its accuracy or completeness. Parties should make and rely on their own enquiries in relation to the property. We have obtained all information in this document from sources we believe to be reliable; however, we cannot guarantee its accuracy. Prospective purchasers are advised to carry out their own investigations.