

18 Leggio Road, Myrtleford, Vic 3737



Sold House

Thursday, 26 October 2023

18 Leggio Road, Myrtleford, Vic 3737

Bedrooms: 4

Bathrooms: 4

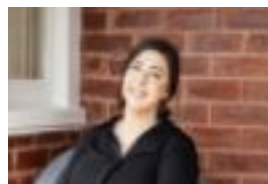
Parkings: 2

Area: 754 m2

Type: House



Sandra Dondio
0409152948



Bre Sacco
0402499257

Contact agent

Presenting a 4 bedroom, double-story solid rendered home nestled on a generous 754sqm block, this property is the essence of luxury and comfort. Boasting a spacious layout and thoughtfully designed features, this residence offers a harmonious blend of style and practicality. Step into a world of elegance with four large bedrooms, two of which are graced with ensuites and walk-in robes, whilst the other two bedrooms feature built-in robes, ensuring ample storage space for the entire family. The heart of the home lies in the open-plan kitchen, dining, and living area, where culinary enthusiasts will appreciate the induction cooktop, wall oven, and abundant bench and cupboard space. The kitchen also includes a spacious butler's pantry with additional bench space, shelving, sink, and dishwasher, catering to all your culinary needs. Added bonus is the ground floor of this residence which offers versatility and convenience. Featuring a large second living area that can be transformed into a games room or utilized as a rental investment, complete with a built-in bar/kitchenette + a study and a bathroom on this level which enhances the functionality of the space, ensuring every need is met. For year-round comfort, a split system provides heating and cooling, while the upper level boasts a ducted heating and cooling system. The property's allure extends outdoors to an alfresco dining area located on the balcony, accessible from the lounge area. Here, you can unwind and soak in the breathtaking views of Mt. Buffalo and the surrounding hills. The residence also offers a laundry with ample bench and cupboard space, along with a large walk-in storeroom for added convenience. Additional features include timber flooring, 24 solar panels (5.5kW), and a double garage with extra storage space. The fully landscaped split-level garden showcases expertly crafted retaining walls and concreted areas, complemented by an exposed aggregate driveway. Conveniently located close to schools, sporting facilities, and a golf course, this property not only provides a luxurious living experience but also offers easy access to essential amenities. Embrace this contemporary living, where every detail has been crafted to perfection. Contact Agent for an inspection today!