

18 Mine Road, Korumburra, Vic 3950

AREA SPECIALIST

Sold Residential Land

Saturday, 13 April 2024

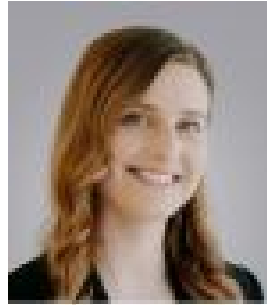
18 Mine Road, Korumburra, Vic 3950

Area: 689 m2

Type: Residential Land



Jack Gilchrist
1300080547



Jassy Batrouney
1300080547

\$265,000

Occupying a prominent position with frontage to the South Gippsland Highway, this vacant block is one of the last few left in Korumburra's CBD and offers endless opportunities for future development. Set right next door to the Korumburra Primary School with side access from John Street and rear access from Stirling Lane, the 689m² block includes two separate titles which could be realigned (STCA). Zoned Mixed Use (MUZ), there is a range of options that could be explored - the South Gippsland Shire Council planning strategy allows for a range of residential, commercial, and industrial uses and for housing at higher densities. Build a home and commercial premises in one, develop them into two or more units or use it as a new location for your business in a great location with plenty of exposure - the choice is yours! Get in touch today for more information. Looking to buy, sell or rent in South Gippsland? Get in touch with your expert team today and call Jack Gilchrist on 0411 181 577 or Jassy Batrouney on 0428 294 388 or pop into our office at 8/43-49 Little Commercial Street, Korumburra. Note: Every care has been taken to verify the accuracy of the details in this advertisement, however we cannot guarantee its correctness. Prospective purchasers are requested to take such action as is necessary, to satisfy themselves of any pertinent matters.