

18 Simmons Court, Chirnside Park, Vic 3116



Townhouse For Sale

Friday, 17 May 2024

18 Simmons Court, Chirnside Park, Vic 3116

Bedrooms: 4

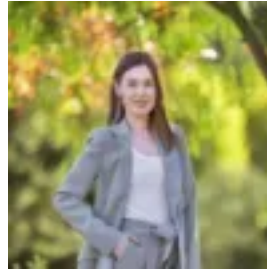
Bathrooms: 2

Parkings: 2

Type: Townhouse



Matthew Lockyer
0398706211



Erin McDougall
0398706211

\$770,000 - \$840,000

Peaceful situated within the sought-after Cloverlea Estate neighbourhood, set amidst rolling communal lawns and parkland, this quality contemporary residence boasts generous open plan interiors across a zoned two storey floorplan. Enjoying an enviable cul-de-sac location, the home offers an enticing low maintenance lifestyle in an effortlessly central location. Positioned a short stroll from Chirnside Park Country Club, buses and Chirnside Park Preschool, and within walking distance of Chirnside Park Shopping Centre, Reading Cinemas, Kimberley Drive Reserve and Chirnside Park Primary School, the home is also just moments from Lilydale Heights College, Oxley Christian College, Lilydale Station, and Lillydale Lake walking trails and playgrounds. An inviting open plan living and dining area flows out via sliding doors to a sunny paved patio, offering ample space for outdoor dining and entertaining. Low maintenance landscaped terraced gardens surround the private backyard, creating a secure haven for family play or pets. The spacious stone kitchen includes a breakfast bar, quality soft-close cabinetry, a large corner pantry, sleek recessed LED lighting, and stainless steel appliances with a dishwasher, a 900mm oven and a 900mm gas cooktop. Secluded on the upper level, the oversized master bedroom offers a fully-fitted walk-in wardrobe and a bright private ensuite with a semi-frameless glass shower. Three additional bedrooms are each equipped with built-in wardrobes, and are complemented by an elegant central bathroom with a semi-frameless glass shower and a separate bathtub. On the main floor, a guest powder room is positioned alongside a full laundry with direct outdoor access. Featuring impressive inbuilt storage, and split system air conditioning and heating in every room, the home also includes a remote double lock-up garage with convenient internal access. Disclaimer: The information contained herein has been supplied to us and is to be used as a guide only. No information in this report is to be relied on for financial or legal purposes. Although every care has been taken in the preparation of the above information, we stress that particulars herein are for information only and do not constitute representation by the Owners or Agent.