

18 Skyburnett Street, Reedy Creek, Qld 4227



House For Sale

Wednesday, 31 January 2024

18 Skyburnett Street, Reedy Creek, Qld 4227

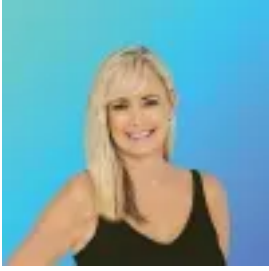
Bedrooms: 4

Bathrooms: 2

Parkings: 2

Area: 905 m2

Type: House



Tracy Tomars

0755930044

Expressions Of Interest

Nestled on the high side of one of The Observatorys premier family-friendly cul-de-sacs sits this north-east facing home showcasing stunning ocean and city skyline views with native bushland surroundings. But don't let the serene location fool you, you are also only 9km drive to the white sands and world-famous surf breaks of Burleigh beach. The owner's attention to detail and desire to create something special has resulted in a beautifully executed property layout with magnificent low maintenance landscaping that complements the prestigious nature of the home. One of the many features of the property is the collection of generous individual living zones that allows each member of a growing family to relax in their own private sanctuary. High ceilings accentuate a feeling of space and serenity with a separate home office with separate entrance providing the perfect work from home opportunity. Luxury resort-style inclusions include a wood fireplace, lap pool and private jacuzzi with low maintenance, fully irrigated garden system ensuring manicured lawns are well maintained. The location includes the convenience of a generous sized children's playground at the end of the street with a huge fully fenced dog park adjacent to it. Add this to your short list of MUST VIEW properties.

Features:

- Multiple generous sized living and entertaining areas
- Separate work from home office space with its own external entrance
- Large master bedroom with balcony access and amazing views. Walk-in robe, ensuite with bath and double vanity
- 3 remaining bedrooms with built in robes and ceiling fans
- 9ft ceilings throughout and recently installed air-conditioning
- Spacious kitchen with stone bench tops, gas cooktop, built-in convection oven, butlers pantry and separate walk-in pantry
- 2 large rear undercover entertaining decks
- Front balcony to take in the magnificent views
- Generous main bathroom plus an additional 2 separate powder rooms
- Private jacuzzi
- Wood Fireplace
- Saltwater pool
- New 6.6kw solar system
- 5,000L water tank
- Full termite barrier system
- Gardens upgraded with full irrigation system
- Double garage with extra high ceiling and generous storage
- Additional off-street parking

Location:

- Local children's playground is at the end of the street with a huge fully fenced Dog Park adjacent to it
- Close proximity to many of the Gold Coast's premier schools (details below)
- Convenient lifestyle, this quiet family friendly location in The Observatory boasts beautiful breezes surrounded by natural reserves, endless unspoilt walking trails
- 4min drive to local Woolworths shopping centre, Medical Centres, BWS, Sushi Train, Hairdresser and Zarraffas coffee house
- Short drive to the iconic Burleigh Beach headland cafes and restaurants
- The Glades Golf Course only 7km away
- Only minutes to M1 motorway and Varsity trains station with an easy commute to Gold Coast airport

Schools & Daycare:

- Green Leaves Early Learning Centre - 2min drive
- Papilio Early Learning - 3min drive
- Kings Christian College - 4min drive
- Hillcrest Christian College - 5min drive
- Somerset College - 7min drive
- All Saints Anglican School - 13min drive

Disclaimer: We have in preparing this information used our best endeavours to ensure that the information contained herein is true and accurate, but accept no responsibility and disclaim all liability in respect of any errors, omissions, inaccuracies or misstatements that may occur. Prospective purchasers should make their own enquiries to verify the information contained herein. * denotes approximate measurements.