

18 Smith Road, Artarmon, NSW 2064



Sold House

Wednesday, 20 March 2024

18 Smith Road, Artarmon, NSW 2064

Bedrooms: 4

Bathrooms: 2

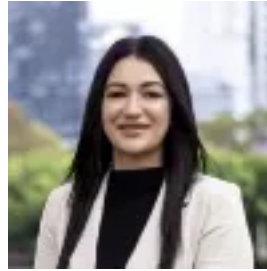
Parkings: 2

Area: 695 m2

Type: House



Andy Yeung
0291968788



Nicolina Talarico
0291968788

Contact agent

www.rwayrealtychatswood.comIn a picture perfect dress-circle street, 'Roslyn' is sure to win hearts, resting high-side on its exquisitely maintained and presently 695.6 sqm block. Built in 1922 and tightly held and loved by its current owners over the last 42 years, the superb double brick home is immaculate, spanning across a substantial single level and spilling out to inspired alfresco spaces, private lawns and a heated pool and spa. The elegant interiors showcase all the hallmarks of its past found in its romantic window seats, high decorative ceilings and picture rails. Formal zones give way to open plan living and a well-appointed Miele gas kitchen. A bonus is the staircase access to the hidden and immense basement area, suitable for storage or as a wine cellar. The location is ideal for family life being footsteps to the bus, station, Artarmon's village heart and popular schools. - Privatised beyond matured hedging, formal gardens- Front covered verandah, high ceilings, some ornate- Timber floors, picture rails, formal lounge with fireplace- Formal dining room, open plan living and dining rooms- Spacious modern kitchen with gas cooking and Miele appliances- French doors to the covered rear deck, barbeque terrace- Retractable blind, child friendly lawn, solar and gas heated pool, gas heated spa- Hidden access to the stairs to the immense basement - Gas bayonet, reverse cycle a/c, plantation shutters- Private master suite with a window seat and a fireplace- Built-in robes, generous bedrooms, quality bathrooms- Easy access to the lock up carport with drive through access to a 2nd car space, storage cupboards, solar panels- Just minutes to Chatswood and arterial roads to the city- Approx. 10 minutes walk to Artarmon station and village shops