

18 Solomon Crescent, Latham, ACT 2615



House For Sale

Thursday, 21 March 2024

18 Solomon Crescent, Latham, ACT 2615

Bedrooms: 4

Bathrooms: 2

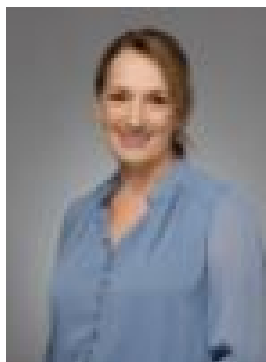
Parkings: 2

Area: 873 m2

Type: House



Matt Sebbens
0402064504



Naomi Sachs
0261473396

Auction

Nestled on an elevated position, this stunning 4-bedroom haven offers more than just a residence – it presents a lifestyle enriched by the serene beauty of the Umbagog Nature Reserve. With 4 spacious bedrooms, 2 bathrooms including an ensuite, and a thoughtfully designed floor plan, this home is tailor-made for family living. Let your little ones roam freely in the expansive backyard or host memorable gatherings in the rear covered entertaining area, perfect for alfresco dining and creating cherished memories with loved ones. Surround yourself with the beauty of established gardens, creating a serene and private sanctuary where you can relax and rejuvenate. From lush greenery to colorful blooms, every corner of this property exudes charm and tranquility, offering a haven from the hustle and bustle of everyday life. With Umbagog Nature Reserve at your door step you can explore winding trails, spot native wildlife, and indulge in the tranquility of nature's embrace, all just a stone's throw away. Whether it's morning exercise, family picnics, or simply unwinding amidst the natural splendor, this location offers it all. Situated in the heart of Latham, this residence offers the perfect blend of convenience and serenity. Enjoy easy access to local amenities, schools, and transport links, ensuring that everything you need is within reach. Yet, with the nature reserve as your neighbor, you'll feel worlds away from the stresses of urban living. Don't miss out on the chance to make this exceptional property your own. With its unbeatable location, family-friendly features, and stunning natural backdrop, this is a rare opportunity that won't last long.

Key Features:-
Double garage + storage room- Lush established gardens- High side of the street opposite reserve- Timber floors throughout the home- Segregated master bedroom with ensuite & WIR- Expansive covered outdoor entertaining area- Front porch with nature views- Located close to schools, shops and walking trails- Auto blinds to the front bedroom windows
Block size - 872m² Living size - 144m² Garage size - 53m² (includes laundry)
Rates - \$3,309.24 per annum
Land Tax (if rented) - \$5,698.60 per annum