

18 Stearman Court, Zuccoli, NT 0832



Sold House

Monday, 14 August 2023

18 Stearman Court, Zuccoli, NT 0832

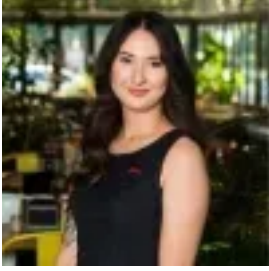
Bedrooms: 4

Bathrooms: 2

Parkings: 2

Area: 800 m2

Type: House



Mimie Pollock
0889315000



Judy Blore
0408898551

\$780,000

Stylish designer living is a dream in this immaculate family-friendly home that combines quality interiors with relaxed poolside entertaining with lush, private bushland views at rear. Spacious open-plan living joins four generous bedrooms to suit the growing family, and no expense has been spared on quality modern appointments to the gas kitchen, family-sized main bathroom and luxury master ensuite. The large 800sqm block backs onto natural bushland fringed by Mitchell Creek, and is just five minutes to Palmerston town centre and 20 minutes to Darwin CBD.- Spacious open-plan living/dining flowing onto stunning alfresco patio- High-end designer kitchen with stone bench tops and butler's pantry- Island breakfast bar, premium cabinetry and s/steel appliances to kitchen- Spectacular in-ground pool with waterfall; poolside pavilion with BBQ- King-sized master bed with walk-in robe and luxury couple's ensuite- Built-in robes to generous, light-filled second, third and fourth bedrooms- Immaculate bathroom with bath, shower and separate powder room- Generous, well-equipped internal laundry with external side access- Split-system a/c throughout; solar power system will cut your energy bills- Double lock-up garage with adjoining storeroom and internal entry Neutral contemporary tones, premium floor tiling and abundant natural light feature throughout this impressive modern home that offers fresh, low-maintenance living without compromising on designer quality. The home's contemporary split skillion facade creates excellent street appeal with entry via the covered front portico and into a wide reception hall. You'll find the king-sized master bedroom privately located on your right at the front of the home. It features a walk-in robe and a designer ensuite with an oversized shower and couple's ensuite. The entry hall flows into the spacious open-plan living/dining area with a striking modern kitchen that features sleek black stone bench tops, premium cabinetry in contemporary white, stainless steel appliances and a butler's pantry. Wide glass sliding doors connect the space onto an integrated patio that overlooks the in-ground pool with frameless glass fencing and a water feature, and an additional poolside pavilion with alfresco BBQ/kitchen facilities will delight the entertainer. Back inside, three more bedrooms join the immaculate family-sized bathroom and separate powder room off the living/dining area at rear. Add this stunning designer home to the top of your shortlist and organise your inspection today.