

18 Tarragon Way, Chisholm, NSW 2322

Residential Land For Sale

Thursday, 9 November 2023

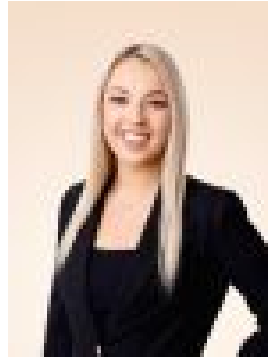
18 Tarragon Way, Chisholm, NSW 2322

Area: 1121 m2

Type: Residential Land



Nick Clarke
0240043200



Emma Crispin
0240043200

PROPERTY PREVIEW

Nestled in the highly sought-after Harvest Estate Chisholm is an amazing opportunity to build your dream family home. Registered and ready to build on, this huge block of land backs directly onto beautiful lagoons and parkland, and is only minutes to the approved shopping village, St Nicholas Early Education, St Aloysius Catholic Primary School and St Bede's Catholic College along with only minutes to the New Maitland Hospital and township of Morpeth. Arriving at the block you have an amazing canvas to work with, having a rare and massive 1,121 sqm block of land allowing for minimal site fees and unlimited build options. The approx. block dimensions are a 21.37m wide frontage and 16.22m rear, along with a 65.92m length. With complete wide frontage and room for side access, build options really are unlimited allowing you to create the dream family home. These flat, large blocks are extremely hard to find so don't miss out, contact your team at Clarke & Co today for your site information. BLOCK SIZE - 1,121 sqm FRONTAGE - 21.37m DEPTH - 65.91m ASPECT - North-Facing backyard Outgoings: Council Rate: \$2,268 approx per annum Why you'll love where you live:- Located just ten minutes from the newly refurbished destination shopping precinct, Green Hills shopping centre, offering an impressive range of retail, dining and entertainment options right at your doorstep.- A 2 minute drive to quality local schooling including St Bede's Catholic College and St Aloysius Catholic Primary.- 15 minutes to Maitland CBD, boasting a vibrant restaurant scene along the newly revitalised Levee riverside precinct.- A short drive to the charming village of Morpeth, offering boutique shopping, gourmet providores and coffee that draws a crowd.- 35 minutes to the city lights and sights of Newcastle.- 35 minutes to the gourmet delights of the Hunter Valley Vineyards.***Health & Safety Measures are in Place for Open Homes & All Private Inspections Disclaimer: All information contained herein is gathered from sources we deem reliable. However, we cannot guarantee its accuracy and act as a messenger only in passing on the details. Interested parties should rely on their own enquiries. Some of our properties are marketed from time to time without price guide at the vendors request. This website may have filtered the property into a price bracket for website functionality purposes. Any personal information given to us during the course of the campaign will be kept on our database for follow up and to market other services and opportunities unless instructed in writing.