

1804/2 Chisholm Street, Wollri Creek, NSW 2205

Apartment For Sale

Thursday, 14 March 2024



1804/2 Chisholm Street, Wollri Creek, NSW 2205

Bedrooms: 2

Bathrooms: 2

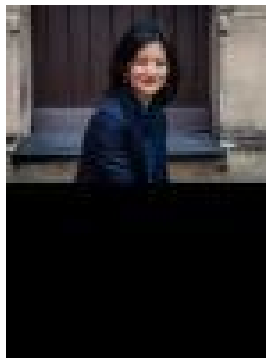
Parkings: 1

Area: 93 m2

Type: Apartment



Richard Kemp
0428930443



Jessica Pung

Price guide \$1,280,000 to \$1,380,000

Perfectly positioned on the water' edge, Shore East introduces a new level of waterfront living to Discovery Point. Featuring an iconic architectural design incorporating an East and a North tower united by a waterfront residents' courtyard. 'Shore East', one of Discovery Point's most sought-after buildings, offers the ultimate in designer apartment living in a truly unique and convenient location. This stunning 2 bedroom, 2 bathroom apartment with a car space and storage has an extensive list of features:

- Stunning outlook & water views, north facing aspect
- Open plan combined lounge and dining
- Sleek modern kitchen with stone bench tops and Smeg appliances
- 2 x Spacious bedrooms with BIW, main with ensuite
- Extensive floor to ceiling windows
- Total area 93sqm excluding car spaces
- 1 x secure car space plus storage
- Large balcony, internal laundry
- Premium finishes throughout
- Easy access to village shops, cafés and restaurants
- Lively village atmosphere in a parkside setting
- Access to 4 gyms, 4 pools and barbecue areas within Discovery Point
- Short walk to the on-site Wolli Creek train station
- Only 3 stops to Central station
- Only 1 stop from Sydney Airport

Council Rates - Approx. \$375 per quarter
Strata Levies - Approx. \$1,836 per quarter
Water Rates - Approx. \$280 per quarter

Discovery Point residents enjoy all that this vibrant community has to offer including the convenience of the village square with its cafés, restaurants and specialty shops, a train station within Discovery Point and over 3 hectares of parks and gardens.