

182 Bettington Road, Carlingford, NSW 2118

Sold House

Wednesday, 6 March 2024

182 Bettington Road, Carlingford, NSW 2118

Bedrooms: 3

Bathrooms: 1

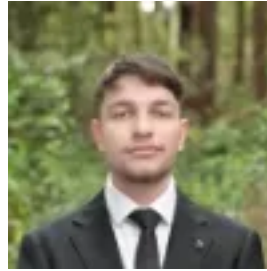
Parkings: 3

Area: 695 m2

Type: House



Daniel Mourad
0298907777



Najih Chahrouk
0298907777

\$1,830,000

Nestled in the highly sought after communal estate of Kingsdene, offers this original 60's three-bedroom brick home and presents great potential for astute investors or families looking to capitalise in this blue-ribbon community. This generously packaged gem sits on approximately 695.6m² of near level land with a colossal 21.79m frontage. It is conveniently located only a few steps away from Kingsdene Shopping village and bus stops traveling north and south on Bettington Road. With the obvious advantage of close proximity to The King's School, Tara, and within the renowned Carlingford West Public School catchment. List of shops at your doorstep; (Pharmacy, Hair salon, Post office, Bottle Shop, Real Estate - Laing Simmons Oatlands | Carlingford, Kingsdene Take Away, Dentist, General Practitioner)Property features:-3 bedrooms-1 bathroom-Original kitchen looking onto the backyard-Single level brick veneer home-Sunroom in the rear for that second living-1 lock up garage with 2 off street parking-Land size of 695.6sqm-21.79m frontageLocation:-10m to nearest bus stop-55m to Kingsdene Shopping Village-600m to Kingsdene Oval-2.2km to North Rocks Shopping Centre-4.5km to Carlingford CourtSchool Catchment:-450m to The Kings School-2.1km to Tara Anglican School-1.9km Cumberland High School-2.1km to Carlingford West Public School