

182 Hopetoun Park Road, Hopetoun Park, Vic 3340



## House For Sale

Tuesday, 2 April 2024

182 Hopetoun Park Road, Hopetoun Park, Vic 3340

Bedrooms: 5

Bathrooms: 2

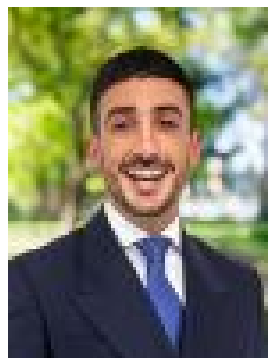
Parkings: 6

Area: 1 m2

Type: House



Ryan Anders  
0397468899



Shane Spiteri  
0353101333

**\$1,450,000 - \$1,550,000**

The original homestead in the exclusive Hopetoun Park area and set on a generous corner allotment of just over 3 acres (12,200m2 approx.) is a family home that effortlessly combines Australian Colonial style with modern substance. Upon entering the tree lined driveway you will find an idyllic bush setting for this impressive home. Designed and built approximately over a 100 years ago, while being renovated in the last 5 years the homestead boasts an incredible combination of modern living and original charm. Upon entry you will immediately take notice of the high ceilings, floorboards, pendant lighting, upgraded cornicing, upgraded skirting boards, traditional fireplaces and original upgrades that continue throughout. The master bedroom situated at the front of the property boasts an impressive bay window with amazing views into the yard, while featuring a walk-in robe and modern ensuite with floor to ceiling tiles, and upgraded shower fixtures. The two bedrooms off the same hall are both massive in size with one boasting a walk-in robe while the other has a built-in robe. The hallway leads to the dining/sitting area with built-in storage and a fireplace for those cozy dinner parties or family nights. Stepping down to the main living area with more than enough space to house the whole family, whether it be for entertaining or relaxing the two fireplaces will keep you warm, also featuring an enclosed study perfect for those who work from home. The remaining two bedrooms off the hall are generously sized with a built-in robe and fireplace in the other. The main bathroom that services the rest of the bedrooms has been tastefully updated with extended tiling and a feature ceiling. The kitchen is in a league of its own which has been impeccably renovated to include only the highest of quality fixtures and fittings including stainless steel appliances, 900mm electric cooktop and electric oven, feature island with stone bench tops, upgraded sink, upgraded cabinetry, plenty of cupboard space including a spacious walk-in pantry featuring a sink and dishwasher. All of this seamlessly incorporating the breakfast bar with picture perfect views of the impeccable back landscaping. The outside of this home is a real wow factor! With a powered gazebo with pitched exposed roof, bricked fireplace, outdoor kitchenette with railway nail handles the functionality and charm of this will be sure to impress. The shedding of the property is more than enough with multiple choices, there are two carports, a workshop shop shed and open machinery/car shed. Combine these with the original milking sheds and open spaces, there is room for everyone to do any and everything! Additional features include: multiple split systems, multiple fireplaces, high ceilings through-out, plenty of storage, crazy amount of car storage, walk-in pantry, electric gate, ceiling fans, and so much more! This property will not last long so call today to book your inspection to ensure you don't miss out! (Photo ID is Required at all Open For Inspections) At YPA Melton "Our Service Will Move You" **DISCLAIMER:** Every precaution has been taken to establish the accuracy of the above information but it does not constitute any representation by the vendor/ agent and agency.