

186 Autumn Street, Geelong West, Vic 3218

whitford

House For Sale

Wednesday, 8 November 2023

186 Autumn Street, Geelong West, Vic 3218

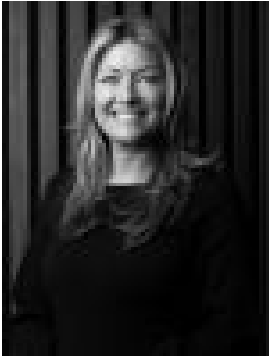
Bedrooms: 5

Bathrooms: 2

Parkings: 6

Area: 898 m2

Type: House



Heidi Trepel



Dale Whitford
0417500576

Auction

Standing proud on Autumn Street, this beautiful C1920s period home offers the ultimate lifestyle. With its prime location, generous land size of approx. 900m², and spacious family-sized layout, there's nothing left to do but move in and enjoy. Inside, the flexible floorplan offers 4-6 bedrooms, perfect for growing families or those needing extra space for a home office or study. The parents' retreat area upstairs provides a quiet sanctuary, while the enormous master suite boasts a dressing room and large ensuite. The beautiful family bathroom and large laundry add to the convenience and functionality of this home. The open plan family/dining and kitchen area overlook the spacious rear yard, creating a seamless flow between indoor and outdoor living. The modern kitchen is set up for entertainment with a bi-fold servery window, making it a breeze to host family and friends. And speaking of outdoor living, the large north-facing rear yard features multiple areas for relaxing and entertaining, including a pizza oven and impressive outdoor open fire. Ducted heating and evaporative cooling provide modern comfortable living year-round. Car enthusiasts and tradies will love the triple-sized garaging (inc shower/wc) with rear access, as well as the secure entry from Autumn Street through an electric gate to a four-car carport and access to the garage. There's ample space for trailers, caravans, boats, and multiple cars, making this property a dream for those with a passion for vehicles or trade. Location-wise, this home ticks all the boxes. Within walking distance, you'll find vibrant Pakington Street with its eateries and shopping strip, as well as local schools, supermarket and the train station. And with a short drive to the CBD and the Ring Road for those commuting to Melbourne, you'll have easy access to all that Geelong has to offer. Don't miss the opportunity to make this your long-term family home. With its timeless charm, generous space, and unbeatable location, this 1920s period home is ready for you to move in and create lasting memories. GO TO www.whitfordproperty.com.au TO VIEW MORE PROPERTIES EXCLUSIVE TO OUR WEBSITE ONLY All information offered by Whitford is provided in good faith. It is derived from sources believed to be accurate and current as at the date of publication and as such Whitford merely do no more than pass the information on. Use of such material is at your sole risk. Whitford does not have any belief one way or the other as to whether the information is accurate and prospective purchasers are advised to make their own enquiries with respect to the information that is passed on. Whitford will not be liable for any loss resulting from any action or decision by you in reliance on the information from Whitford.