

186 Forest Road, Gymea, NSW 2227



Sold House

Friday, 3 May 2024

186 Forest Road, Gymea, NSW 2227

Bedrooms: 4

Bathrooms: 2

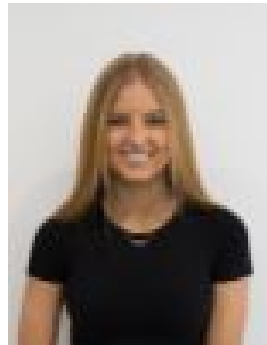
Parkings: 2

Area: 636 m2

Type: House



Daniel Makovec
0295204233



Madison Kelly Makovec
0295204233

\$1,855,000

FOR ALL YOUR REAL ESTATE NEEDS, THERE'S ONLY ONE AGENCY. Situated in a highly sought-after locale, this expansive abode presents a versatile floor plan for seamless family living and ease of indoor/outdoor entertaining. All complemented by its proximity to Gymea amenities and transport, making this opportunity ONE to INSPECT. Features of 186 Forest Road- A foyer entrance invites you through the expansive home- With the entry level offering a guest bedroom with built in robe & split system AC, private home office or fifth bedroom- A huge family rumpus that extends to the covered alfresco area, uniting the indoor-outdoor living and entertaining - Also flows to a private & secure family and pet friendly level back yard- Downstairs bathroom accommodating the family and guests needs, plus separate oversized laundry with yard access- Internal access to the oversized double lock up garage plus storage- Venturing from the foyer to the upper level - Upper-level hosts floating floors throughout the living, dining & bedrooms- Lounge room shares great living space with the comforts of air conditioning- Spacious open plan dining adjoining the light filled kitchen- Kitchen provides ample cabinetry plus breakfast bar - Three bedrooms with built in robes, two bedrooms sharing the northern balcony- Main bedroom enjoys the comforts of split system Air Conditioning - Main bathroom shares large shower, separate bathtub & toilet, plus separate additional water closet & open vanity- Additional features include, freshly painted throughout, new floating flooring upstairs, new led lighting, side shed and storage, plus additional off-street parking or space for caravan, trailer or boat. All in close proximity to Gymea Station and public transport, providing easy access to Gymea Shopping Village with speciality stores and eateries, Gymea Bay Primary School, Port Hacking, Endeavour & Kirrawee High Schools and the greater Sutherland Shire. We welcome your inspection. For further details or to arrange an inspection, contact Daniel Makovec on 0418 458 783. Council Rates: \$493.70 Per Quarter. Water Rates: \$272.00 (Subject to Usage) Per Quarter. Rental Estimate: \$1250 Per Week. For all your Real Estate Needs, There's Only ONE AGENCY