

18A Tarana Avenue, Glenroy, Vic 3046

Stockdale & Leggo

House For Sale

Friday, 1 December 2023

18A Tarana Avenue, Glenroy, Vic 3046

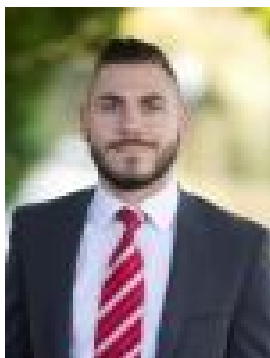
Bedrooms: 3

Bathrooms: 2

Parkings: 3

Area: 623 m2

Type: House



Daniel Imbesi
0393060422

\$900,000 - \$950,000 Private Sale

Located within the highly sought after ANA Estate, this extended weatherboard delight will be sure to have the attention of those who love to entertain at home. Offering a sensational fully enclosable outdoor entertainment zone which expands out to the rear yard and two additional internal living areas, there's an abundance of space available for the growing family. Not to mention we are well positioned in close proximity to local schools, shops and transport.

PROPERTY SPECIFICATIONS:- Three carpeted bedrooms, two of those with built in robes- Living area complimented by a Rinnai gas fireplace, split system air-conditioner and ceiling fan- Updated timber kitchen boasting 600mm appliances including 4 burner cooktop, under bench oven & built in rangehood, dishwasher, double pantry, microwave cavity and tiled splashback- Dining area adjoining the kitchen- Central bathroom with shower, bath, single vanity and medicine cabinet- 2nd additional bathroom boasting a shower, toilet and single vanity- A spacious family area at the rear offering access to the undercover entertainment zone and the rear yard- Outdoors, a sensational undercover entertainment zone complimented with warm tones and polished aggregate concrete which flows out to the grassed rear yard, there is an option to fully enclose this with a retractable blind and sliding door- Fantastic off street car accommodation with an oversize single carport and two additional car spaces in the driveway- Packed with extras including: ducted heating, curtains, security doors, garden shed, great internal storage and more

KEY LOCAL AMENITIES:- 500m (approx.) to Penola Catholic College- 600m (approx.) to Kingsford Smith Ulm Playground & Reserve- 850m (approx.) to Glenroy West Primary School- 1.1km's (approx.) to Pascoe Vale Road shopping strip- 1.4km's (approx.) to Glenroy Train Station- Bus Services on William Street taking you through to Pascoe Vale & Roxburgh Park- Close proximity to the Moonee Ponds Creek Trail- Glenroy is located 12.5km's North of the CBD with terrific City Link, ring road and airport access