

19 & 19A Beryl Drive, Rutherford, NSW 2320



Sold House

Thursday, 14 December 2023

19 & 19A Beryl Drive, Rutherford, NSW 2320

Bedrooms: 5

Bathrooms: 3

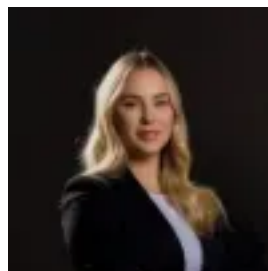
Parkings: 2

Area: 541 m2

Type: House



Craig Malvern
0408257070



Chloe Oliver
0410470874

\$910,000

Don't miss this opportunity to secure this 4 month old Dual Key investment property in the heart of Rutherford. The MAIN RESIDENCE is complete with 3 large bedrooms with built in robes and ceiling fans, ensuite and main bathroom. The spacious kitchen is the centre piece of the home and features stone bench tops, stainless steel appliances and a dishwasher. With ducted AC throughout and boasting a single remote garage with internal entry, undercover entertaining area and large yard this home is sure to please and is currently leased at \$550/week. The GRANNY FLAT boasts 2 spacious bedrooms with built ins, bathroom and single lock up garage, entertaining area, back yard and is leased at \$450/week. • Stainless steel appliances • Ducted Air Conditioning • Ceiling fans • Remote garages • Undercover entertaining area* Dishwashers in both homes. Combined rental income of \$1000/week with great depreciation benefits for the astute investor. Disclaimer: We have been furnished with the above information; however, Linder Group gives no guarantees or undertakings concerning the accuracy, completeness or up-to-date nature of the information provided. All interested parties are responsible for their own independent enquiries in order to determine whether this information is in fact accurate.