

19/20 Pyrmont Bridge Road, Camperdown, NSW 2050



Apartment For Sale

Saturday, 11 May 2024

19/20 Pyrmont Bridge Road, Camperdown, NSW 2050

Bedrooms: 2

Bathrooms: 2

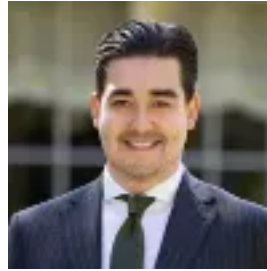
Parkings: 1

Area: 155 m2

Type: Apartment



Augusto Gerocarni
0403279845



Sion Nattress
0492921846

Auction

A grand 155 sqm design and a coveted north-east aspect add to the supreme appeal of this remarkable apartment, ideally imagined for spacious indoor/outdoor living. The conversion of the nurses' quarters of 'Venables House' c1903 preserves the period fabric of the building and utilises the size of spaces as advantages in comfort and flow. Overlooking the building's garden, this apartment's huge balcony is a fabulous setting for gathering with friends and can be accessed from every room. Complete with secure parking and access to superb facilities, this prospect also scores highly in location appeal, set between vibrant village hubs in Annandale and Glebe and a stroll from the University of Sydney. -?Several highlight windows increase the intake of natural light-?Kitchen features marble benchtop and stainless appliances-?Sheltered balcony with space for a daybed, dining area and BBQ-?French doors from living space and bedrooms access balcony-?Both bedrooms are spacious and equipped with built-in robes-?Master has ensuite, main bath with bathtub, laundry is adjacent-?Refurbished building with upgraded common areas and lifts-?Shared access to the garden, two pools and two gymnasiums-?Car space with storage box, 470 city bus available on the street-?Stroll to Annandale Supabarn and Booth Street cafes and eateries