

19/26 Careel Close, Helensvale, Qld 4212



Townhouse For Sale

Tuesday, 11 June 2024

19/26 Careel Close, Helensvale, Qld 4212

Bedrooms: 4

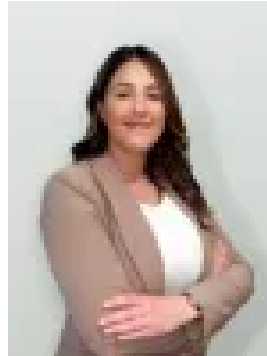
Bathrooms: 2

Parkings: 2

Type: Townhouse



Melanie Johnson
0406336133



Megan Sloss
0401053569

Contact Agent

Seize the chance to own this exceptional four-bedroom townhouse, complete with modern features for contemporary living. Positioned in a quiet but conveniently located complex within walking distance of all amenities - Westfield Helensvale, Helensvale Plaza, public transport including the train and tram station as well as schools and parks. Experience the immaculate charm of this property, designed with attention to every detail. The open-plan layout seamlessly connects the lower level, beckoning you to a private outdoor patio that is effortless to maintain - perfect for those who value both style and practicality. Situated next to the patio doors - in an ideal position for outdoor entertaining - the modern kitchen is also flooded with natural light and includes an abundance of storage and plenty of benchspace with a breakfast bar, creating a bright and welcoming atmosphere ideal for everyday meals and special gatherings. Upstairs, four generously sized bedrooms, all with air conditioning provide ample space for rest and relaxation. The luxurious master suite features a spacious walk-in robe, a private ensuite, and a balcony overlooking the complex's resort-style swimming pool, offering a serene retreat. Combining comfort elegance, and convenience in a beautiful setting, this townhouse is a perfect investment opportunity or outstanding place to call home. Property features include:

- Double storey townhouse with only 1 adjoining neighbour
- 4 spacious bedrooms
- Neat and tidy kitchen stone benchtop, dishwasher and large pantry
- Combined lounge and dining
- Undercover entertaining area, low maintenance courtyard
- Oversized main bedroom with walk in robe, ensuite and sun-drenched balcony
- All bathrooms with stone benches, main bathroom with bath, shower and separate toilet
- Spacious laundry and powder room downstairs
- Plenty of storage throughout
- Air conditioning
- Ceiling fans
- Double lock up garage with storage
- Low body corporate, pool, BBQ area and visitor parking

Helensvale is a highly desirable location, neighbouring Hope Island & Arundel, with an abundance of local shops, restaurants, and recreational facilities all within 5km, Easy access to the M1, Brisbane 45 mins the Gold Coast Beaches just 20 mins. An abundance of great schools both public and private. Walking distance to Helensvale State Primary and High School Close to shops, parks, and public transport.