

**19/4 Rhiana Street, Pimpama, Qld 4209**



**Townhouse For Sale**

Saturday, 13 April 2024

19/4 Rhiana Street, Pimpama, Qld 4209

**Bedrooms: 3**

**Bathrooms: 2**

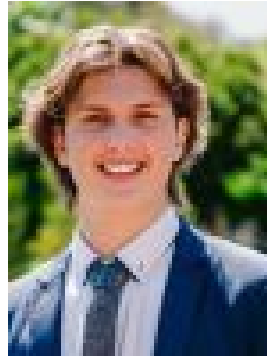
**Parkings: 2**

**Area: 182 m2**

**Type: Townhouse**



Jason Atkinson  
0438690656



Brady Temple  
0466783988

## Expressions of Interest

Welcome to 19/4 Rhiana Street! Nestled in the heart of the vibrant Pimpama, this exquisite townhouse redefines the essence of contemporary living situated on a quiet street with a lush nature reserve just across the road! You are bound to fall in love. Immerse yourself in the modern sophistication of this carefully crafted home. Find ample space to unwind and entertain in the generously sized open plan living area, perfect for cozy movie nights or lively gatherings. Discover three spacious bedrooms, all with built in robes and ceiling fans throughout. Each offering a haven of tranquillity and comfort, ensuring every member of the household enjoys their own private retreat. At the heart of the home you will find a stylish gourmet kitchen, boasting stainless appliances, sleek cabinets, and spacious countertops. Whether cooking a quick meal or hosting a dinner party, you'll enjoy every moment in this space. Features include: • Master bedroom with robe and ensuite • Two additional bedrooms with built in robes and ceiling fans • Central modern kitchen with electric cooktop and oven • Open plan living and dining area • Double lock up garage Additional Features: • Built Approx. 2016 • Fully fenced private courtyard • Ceiling fans throughout • Split air-conditioning in master bedroom and living area • Ample storage Start envisioning your future in this beautiful townhouse surrounded by nature and a welcoming neighbourhood. Pimpama is a highly desirable suburb known for its family-friendly atmosphere and excellent amenities. With top-notch schools in close proximity, it's an ideal location for families looking to provide their children with quality education. The area boasts a range of shopping centres, ensuring convenient access to daily necessities and a variety of retail options. Dining options are plentiful, with a diverse selection of restaurants and cafes to satisfy any culinary craving. Pimpama's strategic location provides easy access to major transportation routes, making commuting a breeze and opening up opportunities to explore the vibrant Gold Coast and all its attractions. Living in Pimpama offers the perfect blend of convenience, comfort, and a thriving community, making it an ideal place to call home. Don't just dream of modern living, make it your reality at 19/4 Rhiana Street. Elevate your lifestyle and contact us today! Your sophisticated sanctuary awaits. Important: Whilst every care is taken in the preparation of the information contained in this marketing, Ray White will not be held liable for the errors in typing or information. All information is considered correct at the time of printing.