

19/95 Strickland Terrace, Graceville, Qld 4075



Townhouse For Sale

Tuesday, 28 May 2024

19/95 Strickland Terrace, Graceville, Qld 4075

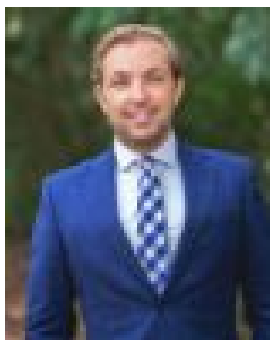
Bedrooms: 3

Bathrooms: 2

Parkings: 2

Area: 166 m2

Type: Townhouse



Lachlan Humble

0438688347

FOR SALE

Backing onto Graceville Avenue Park, this two-storey townhouse is immersed in nature and enjoys a tranquil parkside position in 'Graceville Green'. Showcasing a light, open, lofty design composed of large windows and a void ceiling, the residence invites a wealth of sunshine, leafy outlooks, and breezes to create a comforting, calming ambience. Timber floors and air-conditioning adorn the living and dining area, which flows into the superb stonotop kitchen with a stainless steel oven and a dishwasher. Stepping out onto the rear deck and grassy courtyard with direct gate access to the park, this tree-lined retreat is perfect for entertaining, playing with the kids, and exploring the outdoors. Three bedrooms and two bathrooms feature on the main living level, and a double garage and under-house storage area are below. The master suite unveils a walk-in robe and ensuite, while the other bedrooms boast built-in robes and share a balcony. Perched in a private estate of 24 residences backing onto Graceville Avenue Park, 'Graceville Green' features leafy surroundings and on-site amenities, including a swimming pool and BBQ area. Property highlights:- Private townhouse backing onto parkland in 'Graceville Green'- Living/dining area opening to the entertainer's deck and courtyard- Stonotop kitchen featuring a dishwasher and stainless steel oven- 3 bedrooms, 2 bathrooms, 2-car garage, under-house storage- Master bedroom includes a walk-in robe and ensuite- The other bedrooms share a balcony and feature built-in robes- Air-conditioned living area, ceiling fans throughout- Direct gate access from the courtyard to Graceville Avenue Park- Complex of 24 residences with a swimming pool and BBQ area Residing at a remarkable parkside address, residents will love the proximity to wide-open greenery, playgrounds, dog parks, and riverfront walking paths. The Brisbane Golf Club and Queensland Tennis Centre are also nearby and perfect for afternoons with friends. The local IGA, shops and dining are 550m from your door, and you can visit the cafes and restaurants at the Graceville and Sherwood lifestyle precincts. Less than 2km from the Sherwood, Graceville and Tennyson train stations, within the Sherwood State School catchment, and only 22 minutes from the CBD, you will love the lifestyle on offer. DISCLAIMER: Whilst all care has been taken to ensure that the information provided herein is correct, we do not take responsibility for any inaccuracies. Accordingly, we recommend that all interested parties should make their own enquiries and due diligence to verify the information. Any personal information provided to Cameron Crouch Property T/As Ray White Sherwood, will come under the terms set out in our Privacy Policy, which can be found here for your convenience: <https://www.raywhite.com/privacy>.