

19 Allunga Avenue, Port Macquarie, NSW 2444

Sold House

Saturday, 17 February 2024

PERCIVAL
PROPERTY

19 Allunga Avenue, Port Macquarie, NSW 2444

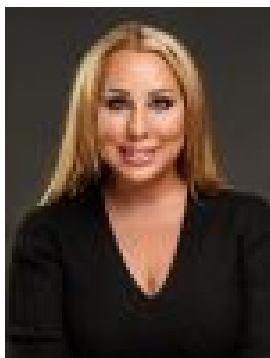
Bedrooms: 5

Bathrooms: 2

Parkings: 3

Area: 613 m2

Type: House



Corrine Cunningham
0265838606



Tyson Cunningham
0481123047

\$1,125,000

Perfect for the family seeking a private haven with versatile spaces, this spacious dual level home delivers a sanctuary designed for effortless living. Set back from the street on a beautifully landscaped 613sqm block this home's elevated north to rear aspect captures a coastal breeze and peaceful views across the tree-lined surroundings of leafy Shelly Beach. Inviting living spaces bathed in natural light transition seamlessly onto outdoors. A well equipped kitchen with extensive cabinetry is ideally positioned to cater for indoor to outdoor entertaining. Experience the unmatched charm of polished timber floors complemented by a freshly painted interior. Timeless neutral tones emphasise space and create a welcoming ambience. Family excellence continues with the upper level revealing five oversized bedrooms, including the large master bedroom with ensuite and double built in robes; a fresh white family bathroom and separate w.c. In addition to a roomy walk in linen closet you will find several reverse cycle air conditioning systems and ceiling fans throughout, ensuring year round comfort. A further all-purpose room is positioned on the entry level, ideal for an office or home business area providing its own access from outdoors. The flexible layout provides the option to make rooms multiple-use to suit your own personal lifestyle, enhancing liveability. Alfresco bliss awaits in the secluded backyard, a tranquil retreat providing all manner of joy with a covered terrace, sun drenched timber deck, lush green level lawn, and lovingly maintained easy care gardens. Discover incredible birdlife such as colourful king Parrots and Kookaburras, just to name a few. The front garden has been thoughtfully designed for minimal maintenance. A double garage, laundry with third wc, 10kw solar panel system, rainwater tank, plentiful storage, and dedicated parking for a boat or caravan complete this outstanding home. Just 15 minutes stroll through rainforest leads to picturesque Nobby and Shelly Beach. Nearby is a children's playground, reserve parklands; local shopping village and Hastings Primary School are just a short 10 minute walk away, while the CBD is an easy 5 minute commute. This charming home and idyllic location are poised to host many special memories with your loved ones.