

**19 Annabelle Boulevard, Keysborough, Vic 3173**

**buxton**

**Sold House**

Wednesday, 20 March 2024

19 Annabelle Boulevard, Keysborough, Vic 3173

**Bedrooms: 3**

**Bathrooms: 2**

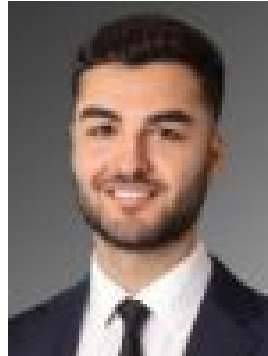
**Parkings: 2**

**Area: 450 m2**

**Type: House**



Ozan Kanbur  
0403644379



Emrah Dilbaz  
0422054302

**\$1,179,000**

Introducing a residence that showcases timeless family living, this contemporary home seamlessly blends high-integrity design with coveted details on 450sqm (approx) in an exceptional location. Appreciate the versatility of this home with its high ceilings, sophisticated colour palette and multiple living spaces, allowing you to create the luxurious lifestyle you desire. Upon arrival, you'll be captivated by the striking rendered exterior and expansive glass windows, setting the stage for the refined interiors that await. Neutral flooring guides you through the designated hallway into a serene formal lounge, while an additional open-plan living/dining zone featuring a tranquil fireplace beckons you to gather with loved ones. The showpiece kitchen, with its stone island benchtop, premium stainless-steel appliances, and full butler's pantry, is a haven for culinary enthusiasts and entertainers alike. Peacefully situated towards the front, the main suite exudes elegance with its walk-in robe and luxurious ensuite, boasting floor-to-ceiling tiles, an oversized shower, and a sleek dual vanity. Two additional bedrooms, bathed in natural light and adorned with built-in robes, offer comfort and privacy for the entire family. Step outside to discover tranquillity in the wonderfully landscaped rear yard, where lawns and family-friendly gardens provide an idyllic backdrop for outdoor enjoyment. Further impress your family and guests in the covered alfresco, set to host the most spectacular summer BBQs. Thoughtfully appointed with added luxuries like solar panels, ducted heating, split-system cooling, ceiling fans, and ample storage space. A full laundry with external access, a garden shed and a double remote garage with internal and rear yard entry add to the ease of everyday living. Offering a lifestyle of unparalleled convenience and endless possibilities. With proximity to prestigious schools, including Haileybury, Lighthouse, and Sirius Colleges, as well as Keysborough Gardens Primary School, Keysborough South Shopping Centre, and Parkmore Shopping Centre, every amenity is within reach. You are just moments away from it all, along with a seamless city commute via the nearby Eastlink Freeway or a leisurely weekend escape along the Peninsula Link.