

19 Beacon Court, Port Macquarie, NSW 2444



House For Sale

Wednesday, 29 May 2024

19 Beacon Court, Port Macquarie, NSW 2444

Bedrooms: 4

Bathrooms: 2

Parkings: 2

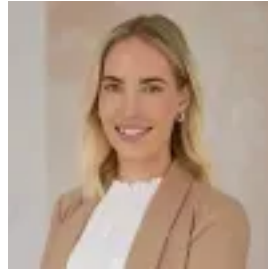
Area: 1026 m2

Type: House



Greg Bates

0418112025



Emily Hay

0432629713

Price Guide \$1,250,000 - \$1,300,000

This impressive home, located in a quiet cul-de-sac at beautiful Lighthouse Beach, features an eye-catching facade and is positioned to take full advantage of the sea breeze and ocean glimpses. Upon entering, you'll be greeted by a high-ceilinged entryway leading directly upstairs to a spacious, light-filled living, dining, and entertaining area. The raised ceilings, architectural windows, and gleaming polished timber floorboards create an inviting atmosphere. The expansive galley-style kitchen, with its stone-top island and elegant glass splashback, is perfectly positioned for seamless indoor and outdoor entertaining. Step out onto the east-facing timber balcony and enjoy captivating views of the ocean and the tree-lined district. One wing of the house features three guest bedrooms, all with built-in robes and convenient access to a stylish main bathroom. The deluxe main suite is truly impressive, boasting a luxurious ensuite, spacious walk-in robe, and a private balcony with ocean views. On the opposite side of the home, you'll find a private lounge room that can double as a theatre room, children's play area, or teenager's retreat. The backyard offers a peaceful escape with a covered patio overlooking beautifully landscaped gardens. With the ocean breeze, contemporary architecture, and a generous 1,026m² block, this home is perfect for those seeking a lifestyle upgrade. Minutes away from Lighthouse Beach, shops, cafes, and schools. Don't miss out on this incredible opportunity! - Elevated home with ocean glimpses - Contemporary architecture with clean lines - Streamlined galley kitchen with gas cooktop - Elegant glass splashback and matching panel - Ceiling fans, ample storage, stone benchtop, timber floors - Deluxe main suite with ensuite, walk-in robe, balcony & views - Open living/dining area with east-facing balcony - Double garage, backyard patio, landscaped gardens - Close to beach, shops, golf, cafes, and schools

Property Details: Council: \$3,025 p/a approx. Land Size: 1,026m² Rental Assessment: \$715 - \$730 p/wk approx. Disclaimer: The information provided in this advertisement is based on details supplied to the agents. The vendor and agents expressly disclaim any liability arising from it. The accuracy of the information cannot be guaranteed, and prospective purchasers should conduct their own enquiries and form their own judgment.