

19 Brosnan Crescent, Strathmore, Vic 3041

House For Sale

Tuesday, 30 January 2024

19 Brosnan Crescent, Strathmore, Vic 3041

Bedrooms: 3

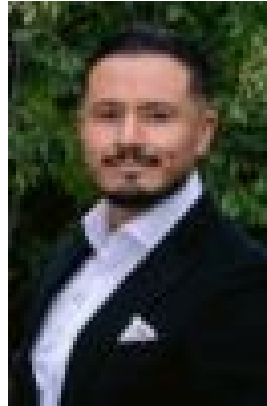
Bathrooms: 1

Parkings: 2

Type: House



Ray Mirza
0409557788



Anthony Orellana
0468629408

\$1,000,000 - \$1,100,000

Ideally located within a peaceful pocket of Strathmore, directly opposite the tranquil Moonee Ponds Creek, on offer is a cherished 3-bedroom family home on a sizable allotment within a coveted area, primed for renovation or redevelopment (STCA). At first impressions, a lush, yet low-maintenance, front garden greets you, with the path leading to the covered verandah. Stepping inside, the traditional entrance hall runs through the home as a central spine. With two separate living spaces, the front lounge enjoys street frontage and a ceiling fan paired with a gas wall heater, ensuring year-round comfort, ideal for entertaining friends and family, or simply enjoying a movie or TV series. Separately located, the combined kitchen/meals area boasts a dedicated dining space, fostering a sense of connectivity by keeping everyone together throughout mealtime. Heading outside, the enormous backyard is brimming with possibilities. With an undercover patio adjoining the home, enjoy alfresco dining year round. For greenthumbs, the existing garden provides mature trees and shrubbery, with plenty of space for further additions, and is ideal for those wanting to grow fruit and veggies. Original in nature, the spacious, light-filled kitchen includes a freestanding combined gas oven and cooktop, deep double sink and an abundance of storage throughout. With plenty of cupboards, drawers and display cabinets throughout, there's a place for everything, achieving a minimalistic approach. Housing a total of three well-proportioned bedrooms, each space is set atop timber flooring and is fitted with a robe. Zoned to the right side of the home, those looking to rest and rejuvenate can do so with ease, while lively entertaining and living can go on without fuss. Centrally located, the family bathroom decorated in contrasting shades of blue offers a built-in bathtub making kids' bathtimes a breeze, updated glass corner shower, and a large vanity with under-bench storage. For utmost convenience, the toilet has been separately located, running off the kitchen/diner. Situated within a quiet, yet highly walkable and ultra-convenient location, enjoy village atmosphere at Lebanon Street strip shopping, recreational activities at Oak Park Reserve & Sports and Aquatic Centre, Oak Park and Pascoe Vale Railway Stations, bus route 469 & 501 providing connections to Essendon Railway Station and trams along Mt Alexander Road, and meandering trails along Moonee Ponds Creek.