

19 Clare Crescent, Berkeley Vale, NSW 2261



Sold House

Thursday, 17 August 2023

19 Clare Crescent, Berkeley Vale, NSW 2261

Bedrooms: 5

Bathrooms: 3

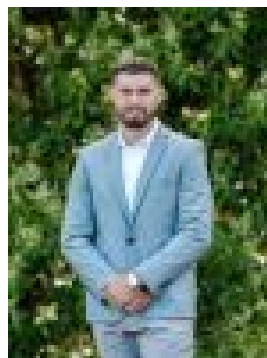
Parkings: 3

Area: 872 m2

Type: House



Ian Boyle
0243139043



Blair Ryan
0243139043

\$1,000,000

If you are looking for a house with the "WOW" factor, then look no further than this beautifully presented family home. Positioned in a popular part of Berkeley Vale, just a short walk to the stunning Tuggerah Lake, local shops, and schools, and a 10-minute drive to the M1 motorway this is the perfect home for commuting also. There are five bedrooms (easily made into six), three bathrooms, a wonderfully designed kitchen and butler's room, stone benches and rake ceilings, a grand living room with a wood-burning fireplace, a huge sunroom, ideal for entertaining, and travertine stone floors throughout (160sqm). The home has been renovated to a particularly high standard, yet not so much as to lose the obvious character and charm the house was originally built with. The accommodation flows nicely from inside to out and with almost 900 sqm of land, there is potential for further improvements like a detached garage or carport. Outside the home is just as well maintained, with maintenance lawns, gardens and the icing on the cake is the exceptionally well-converted shed to a teenagers/in-laws' retreat. If you have a teenager that likes their own space, or perhaps moving in with the relatives, then this is perfect. They have their own access and fully appointed retreat. Do not miss out on this amazing home in the growth suburb of Berkeley Vale and call Ian for inspections and further info.

- Five bedrooms with a master boasting a walk-in robe
- Multiple living areas
- Three bathrooms
- Gorgeous kitchen with stone benchtops
- Fenced level 872 Sqm block (approx.)
- Fully self-contained studio at the rear
- Salt water inground pool
- Character-filled home with raked ceilings
- Wood burner
- Off-street parking for a boat and caravan
- Walk to Tuggerah Lake
- Minutes to local beaches, shops, and M1

Disclaimer: All information about the property has been provided to Ray White Berkeley Vale by third parties. Ray White Berkeley Vale has not verified the information and does not warrant its accuracy or completeness. Parties should make and rely on their own enquiries in relation to the property. We have obtained all information in this document from sources we believe to be reliable; however, we cannot guarantee its accuracy. Prospective purchasers are advised to carry out their own investigations.