

**19 Ercildoune Avenue, Beverley Park, NSW 2217**



**House For Sale**

Wednesday, 3 April 2024

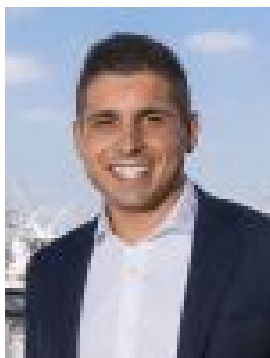
19 Ercildoune Avenue, Beverley Park, NSW 2217

**Bedrooms: 4**

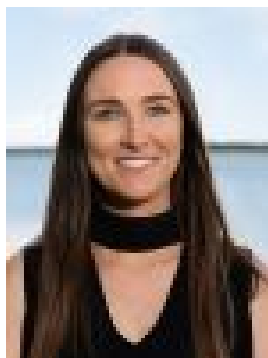
**Bathrooms: 2**

**Parkings: 6**

**Type: House**



Bill Tsounias  
0295293633



Jessica Terry  
0295293633

**Price on request**

This stunning Californian bungalow style home has been stylishly renovated to provide superb family living with high-end finishes and a spacious considered layout. Peacefully set in a coveted pocket, the property boasts excellent proximity to every amenity:- Expansive sunlit living and dining area with soaring ceilings and skylights- Full width undercover entertainers' patio with integrated barbecue kitchenette- Sensational mosaic tiled inground pool with spa jets and manicured level garden- Sleek stone kitchen with breakfast island, 900mm Smeg cooker and ample storage- Double bedrooms with large built-ins and ceiling fans- Luxe bathrooms with freestanding tub plus dual vanity and shower ensuite- Well designed laundry and versatile den or home office space- Ducted multi-zone air-conditioning, plantation shutters, luxe floorboards throughout- Four car garage with internal access, opens out to pool- Minutes to the beach, 200 metres to Beverley Park Golf Course