

19 Jenny Lane, Fountainsdale, NSW 2258

Sold Acreage

Thursday, 9 November 2023

19 Jenny Lane, Fountainsdale, NSW 2258

Bedrooms: 3

Bathrooms: 2

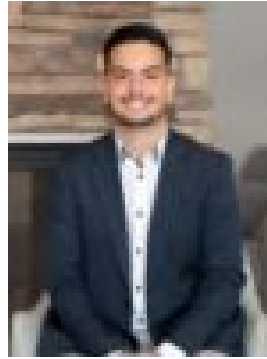
Parkings: 2

Area: 5013 m2

Type: Acreage



Jake Smith
0423284610



Isaac Scarcella
43888888

\$1,680,000

Welcome to 19 Jenny Lane, Fountaindale – a slice of paradise for nature lovers and gardening enthusiasts alike! Nestled on 1.2 acres of meticulously maintained flat land, this property is a gardener's haven, boasting lush gardens, vibrant flower beds, and a tranquil ambiance that will transport you to a world of serenity. The main residence, a charming 3-bedroom, 2-bathroom home, is a testament to comfort and convenience. With a single lock-up garage featuring an attached workshop, DIY projects and storage are a breeze. The property also offers a delightful loft sleepout, perfect for guests or a peaceful retreat with stunning garden views. You'll love the harmony between indoor and outdoor living as you step onto the veranda to enjoy your morning coffee or host gatherings under the stars. Imagine the possibilities that await at 19 Jenny Lane – from tending to your own thriving garden to creating memories in this cozy and spacious residence. With its idyllic location and generous amenities, this property invites you to experience a lifestyle where tranquility and creativity come together. Private and in an incredibly convenient location. Approximately 11 Minutes to Westfield Tuggerah, 9 Minute drive to Ourimbah Train Station, 8 minutes to the M1 Motorway and 15 minutes from a range of beautiful beaches that the Central Coast has to offer. Features include:- 3 bedrooms, with built in wardrobes and walk in wardrobe to the main- Well presented bathroom with generous proportions and ensuite to main- Great sized kitchen with gas cooking and an island bench- Sleepout for guest accommodation or teenagers retreat- Split system air-conditioning for climate control and fireplace- Multiple indoor living areas - Large veranda overlooking the lush greenery- Single lock-up garage with additional storage and workshop- Town water and water tanks for the gardens- Land size: Approximately 1.2 Acres (5,013sqm) of flat land View: By Appointment Agency: Stone Real Estate Agent: Jake Smith