

19 Kennealy Street, Surrey Hills, Vic 3127

HEAVYSIDE

House For Sale

Thursday, 13 June 2024

19 Kennealy Street, Surrey Hills, Vic 3127

Bedrooms: 5

Bathrooms: 2

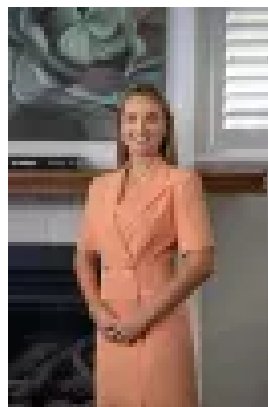
Parkings: 2

Area: 705 m2

Type: House



Tim Heavyside
0394703390



Paige Heavyside
0394703390

\$2,000,000 - \$2,200,000

Watch the auction live here: <https://heavyside.co/live-auction/THE PROPERTY> Ideally positioned in a tree-lined street this enticing property presents a wonderful opportunity to secure your dream lifestyle in this premium locale. Set on a generous 705sqm approx. block, the location could not be better, with boutique shopping, sidewalk cafés, picturesque parkland, trains and trams, and an array of coveted primary and secondary schools all just a pleasant walk away. Perfectly primed for a renovation or extension (STCA) the existing five-bedroom, two-bathroom weatherboard home boasts an array of period features throughout including ornate fireplaces, picture rails and stained-glass windows, and is ready for a new lease of life. Certain to appeal to families looking to secure a foothold in one of Melbourne's most popular leafy suburbs, this charming property offers an endless array of exciting possibilities to make it your own. THE FEATURES

- Charming five-bedroom, two-bathroom weatherboard period home
- Positioned on a generous 705sqm (approx.) allotment
- Exceptional opportunity to renovate or extend (STCA)
- Ideally located in a quiet, leafy, tree-lined street
- Just a short stroll to boutique shopping & cafés
- An array of parkland nearby including Canterbury & Surrey Gardens
- Easy access to both trains & trams for a stress-free commute
- Walking distance to coveted primary & secondary schools
- An exceptional opportunity to secure your dream lifestyle

THE LOCATION Enjoying an unbeatable location, you are only a short walk away from deluxe shopping and cafés on Mailing Road, beautiful parkland within Surrey and Canterbury Gardens, Chatham train station at the end of the street, and Riversdale Road trams. You are also moments from a bus stop that takes you to Camberwell and Box Hill. Additionally, there is a wide selection of premium schools including Canterbury Primary, Strathcona Baptist Girls' Grammar, and Sienna College. THE TERMS: 30|45|60