

19 Koala Close, New Lambton Heights, NSW 2305

CRAWFORD

Sold House

Thursday, 12 October 2023

19 Koala Close, New Lambton Heights, NSW 2305

Bedrooms: 6

Bathrooms: 3

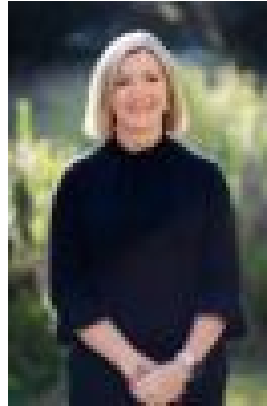
Parkings: 4

Area: 859 m2

Type: House



Phillip Swan
0478845591



Amanda Swan
0457809434

Contact agent

This home is instantly appealing to families in need of multi-generational living or those seeking space and supreme comfort amidst established leafy surrounds. Boasting 6 bedrooms including a self-contained studio and study, multiple living areas, 3 bathrooms and garaging for 4 cars plus additional off street parking, you will be blown away with the sheer size of this residence. Situated over a number of levels, with the main living, kitchen and sleeping quarters on the top and the fully equipped and self-contained studio on the lower level featuring a tidy kitchenette, ample bathroom, combined bedroom and lounge area that opens out to the rear yard. Features include:-
- Master bedroom with walk in robe, ensuite and sliding door access to the rear verandah – perfect to wake up, have a morning coffee and enjoy the sounds of nature.
- A timber kitchen featuring 4 burner gas stove, loads of storage and bench space and large windows that show off the views over the treetops of New Lambton Heights
- Multiple living areas including generous family room with large picture windows to maximise natural light, combined lounge and dining and additional rumpus room downstairs.
- Ducted Air Conditioning to the upper level.
- Sizeable lock up garden shed to keep all your toys safe and sound and a paved outdoor entertaining area ideal for hosting those bbq's on hot summer nights. Located at the top end of a quiet cul de sac, this delightful home captures sweeping views of the surrounding district. It's within the catchment zone for Wallsend South Primary School and the much sought after Lambton High School and in close proximity to John Hunter Hospital and Kotara Westfield it promises a lifestyle of sheer comfort and total convenience. Council Rates: \$2443 approx pa Water Rates: \$915 approx pa Phone Phillip Swan to arrange your inspection on 0478 845 591. Disclaimer: We have obtained all information provided here from sources we believe to be reliable; however, we cannot guarantee its accuracy. Prospective purchasers are advised to carry out their own investigations and satisfy themselves of all aspects of such information including and without limitation, any income, rentals, dimensions, areas, zoning, inclusions & exclusions.