

19 Lookout Street, Blackheath, NSW 2785



House For Sale

Tuesday, 23 January 2024

19 Lookout Street, Blackheath, NSW 2785

Bedrooms: 2

Bathrooms: 1

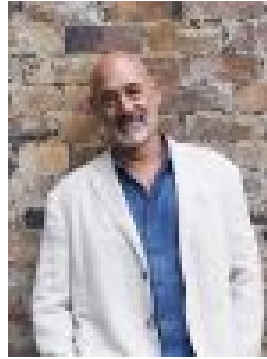
Parkings: 2

Area: 697 m2

Type: House



Adele Colman
0414876211



Lewis Thyer
0430043806

\$730,000 - \$780,000

Here it is! A classic Blackheath cottage that has character in spades and is move in ready. Set on a manageable 698M2 level block this gorgeous home is in a prime position and close enough to the village centre to be convenient but not so close that you are overrun with day trippers. And once those pesky day trippers have left the area the restaurant precinct with hatted dining, wine and Taco bars and cafes is your very own playground! The cottage itself proudly presents itself to the street with a lovely front verandah, a perfect place to sit and take in the passing parade as well as the sweet cottage garden plantings. There is a lovely entry vestibule that is divided from the kitchen area by the original rustic brick fireplace, to the left is the first of the two bedrooms. This bedroom is small but sundrenched and has a terrific set of French doors that open onto the front veranda. The kitchen itself is roomy but not so large to be impractical and has everything you need with a gas hob and a lovely butlers sink topped off by gorgeous period stained glass windows. The second bedroom runs off this area, larger than the first and again is drenched with sunlight due to its northern aspect. The bathroom is also loaded with charm with a classic black and white scheme, period wash-stand and walk in shower. At the rear of the home the main living area accommodates dining and living with an open plan feel so guests are easily interacted with whilst you put the finishing touches on the evening's delicious dinner. This home is a treat, yes, it may be a smaller home, but for those who are looking for stylish and charismatic living without the footprint it may be just the ticket!

- Manageable 698M2 Block.
- Large free-standing Garage and Storage area.
- Magnificent Shady Elm Tree!
- Reverse Cycle Airconditioning
- Natural Gas Heating
- Instantaneous Gas Hot Water