

19 Maluka Street, Bellerive, Tas 7018

RIPPLE

House For Sale

Tuesday, 23 April 2024

19 Maluka Street, Bellerive, Tas 7018

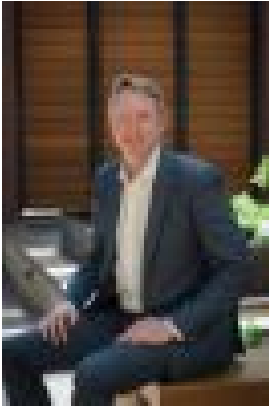
Bedrooms: 3

Bathrooms: 2

Parkings: 3

Area: 655 m2

Type: House



Warwick Page
0362280895

Offers Over \$895,000

Perfectly positioned at the end of a quiet cul de sac, with all-day sun and absolutely stunning water views, this superb three-bedroom family home has so much to offer - and all just 10 minutes from central Hobart. Updated with double glazing throughout and reverse cycle air conditioning, energy efficiency and comfort are a top priority. The spacious and modern open plan living area contains an impressive kitchen with plenty of storage, a long island bench, and walk-in pantry. There is also room for dining and the inviting lounge offers a sophisticated space to unwind. Double sliding doors provide direct access to the wide timber deck and a seamless connection between indoors and out. Offering glorious views over the Derwent River and towards kunanyi/Mt Wellington, this extended living space is perfect for those who love to entertain, yet equally suited to relaxed family dining or quiet contemplation. Separate to the main living area, the sleeping quarters consist of three large and light bedrooms with built-in wardrobes, as well as an ensuite in the master bedroom. The family bathroom includes a vanity, shower over bath, and toilet; and there is room for a study nook in the transition between living zones. Set on 655 sqm of land, with low maintenance grounds and a fenced rear yard, you can use this versatile space to suit your needs - transform it with some thoughtful landscaping, start that veggie garden you've been dreaming of, or keep the yard work to a minimum by maintaining the area as-is. There is also parking for one car in the enclosed carport plus an additional 2 Off street spots, and under-house storage available. Picturesque Bellerive Beach and foreshore trail are only minutes away, and Waverly Flora Park has walking tracks for all abilities to get outdoors and explore the beautiful bushland reserve. There are quality schools for all year levels; regular bus services along Clarence St and Waverly St; and being conveniently positioned between Shoreline Plaza, Bellerive Quay, and Eastlands means that all amenities are easily accessible. A stylish and generously sized home in a peaceful location with all conveniences close at hand - what more could you ask for? Warwick will be delighted to show you around this standout property in one of the Eastern Shore's most popular suburbs, so be quick to arrange a time to view and avoid disappointment. We have obtained all information in this document from sources we believe to be reliable; however, we cannot guarantee its accuracy. Prospective purchasers are advised to carry out their own investigations.