

19 Max Glade, Schofields, NSW 2762

Sold House

Wednesday, 27 September 2023



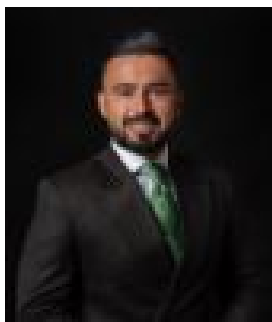
19 Max Glade, Schofields, NSW 2762

Bedrooms: 5

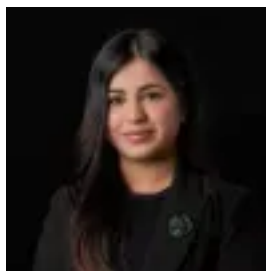
Bathrooms: 3

Parkings: 1

Type: House



Amit Kumar
0288964336



Siya Sachdeva
0288964336

Contact agent

Superbly positioned in the sought-after location of Schofields, this double-story home provides many desirable living opportunities for the growing family or as an ideal investment opportunity. Within proximity to Schofields Train Station, Schofields Village, Tallawong Metro Station, local schools and parks, this home is perfect for all families. The home presents a bright and airy versatile floorplan, complete with large windows that let in plenty of natural light, which flows seamlessly between spaces and into the backyard. Not to mention the undercover alfresco area, which has a built-in, high-quality barbeque with additional storage and a sink. The open plan living, dining and kitchen areas along with a separate media room create the perfect ambience for modern family living and entertaining, absolutely ideal for indoor and outdoor and family entertainment. The hub of the home, the kitchen has been completed with stylish finishes and fixtures showcasing its high-end inclusions, quality appliances including a 5 burner gas cooktop, 900mm oven, dishwasher, an abundance of storage space with a walk-in butler's pantry with second sink and an eat-in breakfast bar. Accommodation consists of five spacious bedrooms, four of which are upstairs and one downstairs perfect for multigenerational families. The master bedroom boasts its private ensuite along with a walk-in wardrobe. Features you will love:- Luxury light fitting throughout- Ducted air conditioning and ceiling fans throughout- LED downlights throughout the home- Wall-hung front façade lights- Rumpus room upstairs - Floor-to-ceiling tiles in all bathrooms- Good-sized, low-maintenance backyard- Remote-controlled, single lock-up garage with internal access and one-car space Location Highlights:- 10-minute walk to premium Galungara Public School- 4-minute walk to the park on Farmland Drive- 5 minutes drive to Schofields Train Station and Schofields Village shopping centre - 5-minute drive to Tallawong Metro Station- Short walk to multiple childcare centres on Alex Avenue Disclaimer: All information contained herein is obtained from property owners or third-party sources which we believe are reliable. We have no reason to doubt its accuracy, however, we cannot guarantee it. All interested person/s should rely on their own enquiries.