

19 Mulbring Street, Awaba, NSW 2283

Avery

Sold House

Wednesday, 28 February 2024

19 Mulbring Street, Awaba, NSW 2283

Bedrooms: 5

Bathrooms: 3

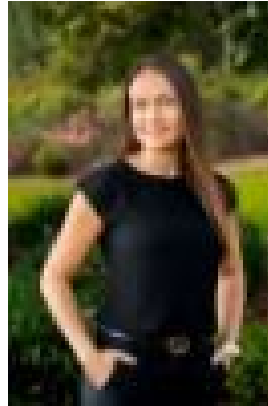
Parkings: 2

Area: 1600 m2

Type: House



Craig Avery
0249591677



Charlotte Nelmes
0413922256

\$765,000

Nestled in lush bushland with just a handful of neighbours this large 1,600 sqm property and its five-bedroom cedar home offers the ultimate lifestyle while retaining connection and access to modern services. You're a ten-minute walk to Awaba Train Station, a short drive to jump on the M1 to Sydney or six-minutes by car to Toronto CBD and glorious waterfront shopping and dining precinct. Discover a serene retreat in Awaba with this delightful property featuring a cedar shiplap exterior, spacious yard, inviting front porch, and a granny flat surrounded by lush bushland. Inside the main residence, enjoy the cozy ambiance with pitched ceilings and exposed beams, offering four bedrooms with built-ins, including a generous master with a 'Jack and Jill' bathroom boasting a separate shower and bath. A second comfortable bathroom complements the layout, while the expansive open-plan kitchen, dining, and living area with its high pitched cathedral ceiling and exposed beams is ideal for entertaining and accommodating large families. Relish seamless indoor-outdoor living with a covered paved patio accessed from the living space, perfect for hosting BBQs and enjoying the almost half-acre property and forest setting. The granny flat is thoughtfully updated, boasting tiled flooring throughout, air-conditioning, a full bathroom, one bedroom, and a modern kitchen. Its light-filled living area features a full wall of French doors that open to a second outdoor entertaining space. Conveniently located near the train station, local school, and a short drive to the M1, Toronto waterfront precinct, and CBD, 19 Mulbring Street, Awaba offers a perfect blend of rustic charm and modern comfort. - Five-bedroom property with two residences- Large 1600 sqm (approx.) property nestled in lush bushland- Ultimate Australian design cedar shiplap, pitched ceiling with exposed beams- Huge open plan living and dining space- Master suite with 'Jack and Jill' bathroom- Multiple outdoor entertaining spaces- Over-sized Singlelock-up garage and workshop, plus ample extra parking- Additional garden shed at back of property- Walking distance to train station, easy access to the M1 and 6mins to Toronto CBD- Awaba Public School 0.19kms, Toronto Adventist School 3.25kms, Toronto High School 4.12kms Avery Property Professionals are proud to present this home to the market. Please contact Craig Avery or Charlotte Nelmes today to secure your inspection. Disclaimer: We have obtained this property information from sources we believe to be reliable; however, we cannot guarantee its accuracy. Prospective buyers are advised to carry out their own investigations.