

19 Neptune Avenue, Newcomb, Vic 3219

House For Rent

Tuesday, 23 January 2024

19 Neptune Avenue, Newcomb, Vic 3219

Bedrooms: 3

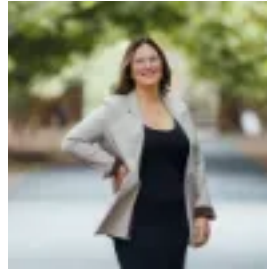
Bathrooms: 1

Parkings: 1

Type: House



Jacqui Allen
0499413364



Sophie Anapliotis
0448273353

\$425 per week

FIRST OPEN FOR INSPECTION - SATURDAY 27TH JAN 2023. To register for an inspection, click 'contact agent' and you will receive the registration link. This peaceful location places you within easy reach of the Geelong East lifestyle and amenities that locals love. A short distance away will find you at Eastern Park, Botanical Gardens and East Geelong Golf Club. Garden Street shopping precinct is moments away as well as a variety of nearby schools include Geelong High School. Close access to the Geelong CBD and Waterfront leaves you spoilt for choice. Features include: - Three bedrooms- Lounge room with heater & split system air-con- Updated kitchen/Meals with ample storage and stainless steel appliances - Central bathroom and separate laundry- Large enclosed yard- Off-street parking and carport- Storage shed Online virtual tours and face to face inspections are available by registration. To register your interest and to apply, reach out to us via the contact form and your property manager will be in touch.