

# 19 Paringa Road, Portsea, VIC, 3944

## Sold House

Saturday, 24 June 2023

19 Paringa Road, Portsea, VIC, 3944

**Bedrooms: 5**

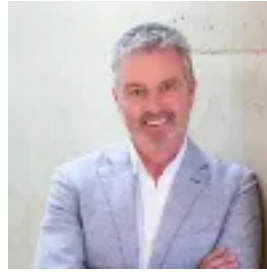
**Bathrooms: 4**

**Parkings: 3**

**Type: House**



Patrick Sinn



Rob Curtain

## Coastal Luxury With Inspiring Views

This contemporary architect-designed residence offers peerless indulgence amongst some of Portsea's finest, commanding an exclusive back beach position with sweeping views over the ocean dunes to Point Nepean. Harmonious family functionality and leisure await, set within 3,142 sqm (approx) of garden, tennis court and pool surroundings.

Enriched by limestone highlights, extensive glazing and elevated ceilings, the home's sleek interiors are styled with refined elegance, forming an ideal retreat for lavish entertaining or everyday relaxed living. Integrated Miele appliances and Liebherr refrigerator, stone benchtops and butler's pantry add to the entertainer's appeal within the central kitchen, orientated to serve the two generous living areas and alfresco zones.

The expansive recreation pavilion frames the extensive vistas beyond a championship-size tennis court and landscaped structural rock gardens, built for entertaining by the stunning, solar-heated infinity pool. Inside, the main suite features a walk-in robe, ensuite and a fitted home office, supplemented by four additional bedrooms and a downstairs rumpus located in the guest wing.

Exhibiting only the finest of finishes with ease of access to Portsea Back Beach and within easy reach of the boutique village and family-friendly bay beaches, its features include automatic gates to a remote triple garage, an alarm and intercom system, ducted vacuum, reverse-cycle ducted zoned heating and cooling, gas log fireplace, underground 100,000 litre water tank, automated irrigation and bore water.

Proudly marketed by the team at Peninsula Sotheby's International Realty.