

19 South Street, Murrumbateman, NSW 2582



Sold House

Friday, 14 June 2024

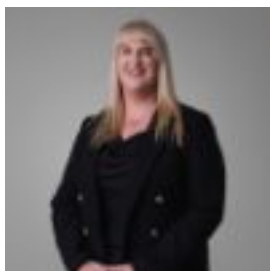
19 South Street, Murrumbateman, NSW 2582

Bedrooms: 3

Bathrooms: 2

Parkings: 2

Type: House



Tammy Bush
0409654931

\$900,000

One of Murrumbateman's original cottages is ready for you to call home. "Woodleigh Cottage" was built by the Greig family in 2 stages. The first in circa 1895 and the second in 1926. The cottage is made with locally sourced materials. Specifically designed to withstand the everchanging climate whilst providing comfort for a hard-working family. Upon entering through the foyer, be captivated by the gorgeous formal lounge room, complete with 10ft ceilings and an open fireplace. You will find yourself wondering which way to turn next. To your left, you will be greeted by the formal dining room of the home, again with an open fireplace and 10ft ceilings. This leads into the kitchen complete with stunning quartz benchtops and quality kitchen appliances and a beautiful travertine floor. Cooking up a storm will be easy whilst in engaging with your guests in the formal dining or lounge. The first of three bedrooms with its own bathroom and the family laundry completes this side of the cottage. At the other end of the formal lounge, open the French doors to the oversized family living and dining space, where the main bedroom and third bedroom are adjoined. The second bathroom completes this side of the cottage. Open the double doors from the oversized family space to your outdoor entertaining area overlooking a lush and easy-to-maintain cottage garden. Breathe in the fresh country air, all the while knowing that the quaint Murrumbateman Village is a short stroll away. Whether it be a freshly brewed cappuccino, a light lunch or an evening dinner at the Murrumbateman Country Inn, the local IGA and shops provide all the necessary amenities to complete a tranquil "cottage" country lifestyle. Easy access to Yass and all the Yass Valley Region has on offer, approximately 30 minutes to Canberra, and approximately 2 and half hours to Sydney. "Woodleigh Cottage" is a piece of Australian pioneering history. Features: • Circa built 1895. Travertine floor tiles in the kitchen • ILVE 900 gas cooktop electric oven • Gas ducted heating • Reverse cycle split systems x2 • South facing • Quartz benchtops • AEG overhead exhaust fan and Asko dishwasher • Multiple fireplaces • 1000m² block • Polished cypress pine timber flooring stained and waxed • Double-glazed French doors • Hand-cut hardwood roof trusses • 10ft shiplap pine ceilings • Rammed earth walls • Septic is serviced every 3 months for approximately \$350 a year Essentials: • Living area: 178m² approx. • Block size: 1000m² • Rates: \$348 per quarter. • Shed size: 21.2m² approx. • Carport size: 18.29m² approx. • Side entertaining size: 15.41m² approx. • Back deck size: 24.42m² approx. • Age: 1895