

19 The Brentwoods, Chirnside Park, Vic 3116



Sold House

Friday, 19 January 2024

19 The Brentwoods, Chirnside Park, Vic 3116

Bedrooms: 4

Bathrooms: 2

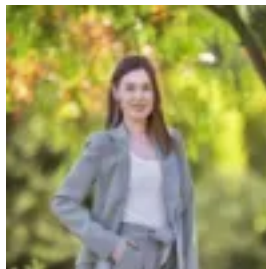
Parkings: 2

Area: 1040 m2

Type: House



Matthew Lockyer
0398706211



Erin McDougall
0398706211

\$865,000

Elevated above the street to showcase sweeping panoramic views towards the mountains of Kinglake and Toolangi State Forest, this generous single level home is poised on an expansive 1040sqm block with a coveted 20.17m street frontage. Presenting a thrilling array of future possibilities, the home offers strong scope for updates or extension if desired, while also creating an enticing opportunity for those looking to build a brand new dream family home. Enviably situated within a peaceful neighbourhood mere moments from local Switchback Road village shopping, Chirnside Park Country Club, Cloverlea Playground and buses, the home is also just a few minutes' drive from Chirnside Park Shopping Centre, and close to Lillydale Lake, Lillydale Station and the famed restaurants and wineries of the nearby Yarra Valley. Privately set back amidst lush established gardens, the brick home is framed by an undercover patio entry. A light-filled formal living room features an open fireplace, and an elegant north-facing bay window boasting impressive elevated views. A separate formal dining room is complemented by a casual meals area / family room at the rear, flowing out to a spacious undercover terrace ideal for relaxed outdoor entertaining. Adjacent, the backyard includes leafy raised garden beds and a family-friendly lawn. The central kitchen includes a Bosch dishwasher, a freestanding stainless steel electric oven / cooktop, ample storage space with a full height pantry, and a breakfast bar for casual dining. Four carpeted bedrooms are each equipped with built-in wardrobes, with the master also offering a private ensuite. The main family bathroom features a separate bathtub, while the home also includes a second W/C and a separate laundry. Including polished hardwood flooring, gas ducted heating, split system air conditioning, an oversized carport, a single lock-up garage and plenty of parking space for a boat / caravan / trailer, the home is zoned for Lillydale Heights College and Victoria Road Primary School, and is also close to Oxley Christian College and Mount Lillydale Mercy College.