

**19 Waurnvale Drive, Belmont, Vic 3216**



**Sold House**

Wednesday, 21 February 2024

19 Waurnvale Drive, Belmont, Vic 3216

**Bedrooms: 3**

**Bathrooms: 1**

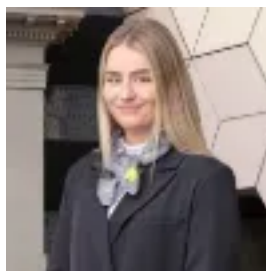
**Parkings: 2**

**Area: 770 m2**

**Type: House**



George Politis  
0352411331



Mollie Chandler  
0475843029

**\$710,000**

This charming residence nestled in a tranquil neighbourhood, offering a delightful blend of comfort and convenience. Boasting a generous 770m<sup>2</sup> allotment, providing ample space for both indoor and outdoor living. As you step inside, you are greeted by a well-designed layout featuring three bedrooms, each equipped with built-in robes, ensuring ample storage. The large central bathroom is a highlight, offering both functionality and style. A separate toilet, cleverly accessible from both the laundry and the bathroom, enhances the overall practicality of the home. The main living area is a haven of relaxation, featuring vaulted ceilings that add an elegant touch to the space. Enjoy breath-taking views and cosy evenings by the beautiful fireplace, creating a warm and inviting atmosphere. The inclusion of a split system, ducted heating/cooling and fans ensures year-round comfort for the entire family. The kitchen is equipped with electric appliances and seamlessly connects to a generous dining area. This space opens up to an undercover rear patio space. The property's backyard is complemented by a convenient garden shed, providing additional storage for tools and equipment. Location-wise, the property is well positioned, just moments away from Waurnd Ponds Shopping Centre, Deakin University, and the Epworth Hospital. Families will appreciate the proximity to excellent educational facilities such as Mandama and Nazareth Primary Schools and Grovedale College. The presence of Deakin University further adds to the appeal of this location, making it ideal for students and academic professionals. 19 Waurndvale Drive is a welcoming home in a peaceful neighbourhood with thoughtful design elements, in close proximity to essential services and educational institutions.