

# 19 Wirraway Circuit, Moulden, NT 0830



## Sold House

Monday, 14 August 2023

19 Wirraway Circuit, Moulden, NT 0830

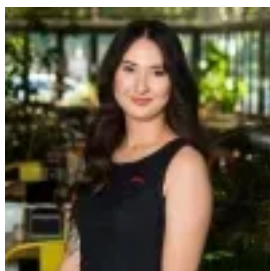
Bedrooms: 4

Bathrooms: 2

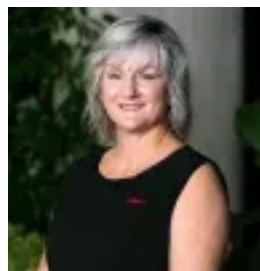
Parkings: 2

Area: 951 m2

Type: House



Mimie Pollock  
0889315000



Sue Cox  
0889315000

**\$450,000**

Expanding over a spacious allotment, this four-bedroom home delivers relaxed, family-friendly spaces that are simply packed with potential. Centred around a tidy kitchen, the home's flow-through living space spills out on either side to an expansive covered verandah, overlooking a generous backyard with no back neighbour. Adding further appeal to the property are two bathrooms, an internal laundry, and parking out the front covered by a shade sail. Spacious, well planned floorplan feels light and bright within Living and family dining space features effortless, flow-through design Central kitchen offers electric cooking and plenty of storage Large master with mirrored built-in robe and ensuite with shower Three additional bedrooms, each with built-in robe Family bathroom with shower-over-bath Laundry features enclosed WC, handy internal and external access Fully air-conditioned throughout Covered car parking at front Covered verandahs at either side of property, open out to generous yard With no back neighbour, this perfectly appealing family home delivers fabulous potential within a light-filled, ground level layout, convenient to the local school and shops. Situated on a quiet street, the home welcomes you in as you step inside its light and airy living area, made up of a separate lounge room and a spacious family/dining room set within a flow-through design. Offering ample opportunity for you to cook up a storm, the neat kitchen overlooks this space, spilling out through the family/dining area onto a covered verandah spanning the length of the home. Ideal for entertaining or simply watching the kids play, this great space looks out over the grassy level yard, framed by easy-to-maintain landscaping. Back inside, you find the large main bedroom conveniently located to the front of the home, featuring both a mirrored built-in robe and ensuite. To the rear of the home, off the generous lounge area, you'll find the remaining 3 bedrooms all serviced by a family bathroom with a separate WC located within the laundry. Completing the fully air-conditioned home is yet another expansive verandah at the other side of the home, plus covered shade sail parking at the front. As for location, Moulden Park Primary School is just 600m from the front door, while childcare and shops are also close at hand. Alternatively, Palmerston shops, restaurants and services are an easy five-minute drive away. Whether you're looking for an investment property or the opportunity to create your dream home, this property offers amazing potential with great bones to build on. See it all in person to appreciate what it's got to offer – organise your inspection today.