

195 Broadwater Road, Mount Gravatt East, Qld 4122 

Sold House

Monday, 23 October 2023

195 Broadwater Road, Mount Gravatt East, Qld 4122

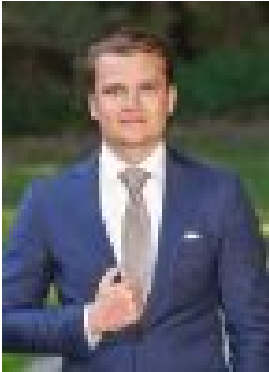
Bedrooms: 4

Bathrooms: 2

Parkings: 2

Area: 612 m2

Type: House



Matt Campbell

0733493370

\$990,000

FANTASTIC OPPORTUNITY TO SECURE A FULLY RENOVATED POST WAR HOME, MOVE IN READY IN THE COVETED MANSFIELD CATCHMENT. WITH A CHANGE IN CIRCUMSTANCES THE OWNER CAN NO LONGER HOLD ON THIS PROPERTY MUST BE SOLD ON OR BEFORE 26/10/2023^Auction via In-Room and Online - 26/10/2023 from 6:00pm, if not sold prior.Auction Location - Mount Gravatt Bowls Club @ 1873 Logan Rd, Upper Mount GravattRegistrations start from 5:30pm.(Phone & Online Registrations must be completed by 3:00pm on Auction Day)Experience unmatched potential in this three-bedroom post-war home in one of Brisbane's fastest growing south-side suburbs, renowned for its local amenities, public transport and schooling.Lovingly updated over the years this home is perfectly set up for a high yielding investment professional couple, a busy family, home based business, or even dual living. This house truly offers something for everyone.Classic post-war features include hardwood floors, high ceilings and ample natural light.The home has been lovingly updated through the years and boasts multiple living and entertaining spaces. The home expands with a fully self-contained granny flat perfect for growing or multigenerational families. Stepping into the backyard you will find the perfect space for pets and children to roam safely overlooked by the generously sized deck.Situated only 12km* drive from the Brisbane CBD, the home is perfectly positioned between Carindale Westfields, Garden City Westfields and is within close proximity to Mount Gravatt Plaza, Civic Fair, public transport, popular public and private schools, local parks and provides easy access to the Pacific Motorway.You'll love,• 612m2 fully fenced block• Four Bedrooms• Two Bathrooms• Close to Abbeville Street Park• Landscaped and manicured gardens• Practical floorplan with character features• Granny Flat• Brand New Roof• Repolished Floorboards• Landscape & Maintained Yard and Gardens• Updated Kitchen & Bathrooms• Two car carport• 6.6kw Solar System• 350m to Civic Fair*• 1.6km to Mt Gravatt Plaza*• 2.8km to Garden City Shopping Centre*• 5km to Carindale Shopping Centre*• 70m to Bus Stop*• 734m Wishart State School *• 1.4km Mansfield State High School *• 2.5km to Gateway north & southbound*• 10km to CBD** * Approximately** Straight Line^ Subject to reserveAll information contained here is gathered from sources we consider to be reliable, however we can not guarantee or give any warranty about the information provided and interested parties must solely rely on their own research and enquiry.