

1A Mary Crescent, Newton, SA 5074



House For Sale

Tuesday, 6 February 2024

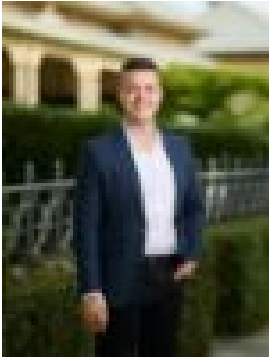
1A Mary Crescent, Newton, SA 5074

Bedrooms: 3

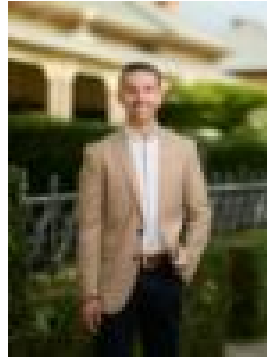
Bathrooms: 2

Parkings: 2

Type: House



Cameron Bowes



Blake Willemer
0481533863

\$699k - \$749k

Please contact Cameron Bowes or Blake Willemer from Ray White to discuss a viewing time. Nestled amongst quality homes in the desirable suburb of Newton, offers an ideal setting for families seeking a vibrant and enriching community lifestyle. Located a mere moments away from Newton Central and with Newton Village in close proximity, residents enjoy convenience and accessibility to essential amenities right at their doorstep. The area's charm extends beyond convenience, boasting an enticing culinary scene along the Glynde food trail, where an array of restaurants, bakeries, butchers, cafes, and grocers await exploration. Built to incredible standards, this light filled home presents premium finishes and a fluid design, maximizing the use of space throughout and offering striking interiors with a contemporary theme. The bright and impressive kitchen features ample storage, mirrored glass splashbacks creating a feeling of spaciousness, soft close gloss laminate cabinets, stone bench tops, dishwasher and the latest of bespoke fixtures. The home features three large bedrooms. This grand suite is the epitome of luxury, worthy of a Vogue Living magazine cover. The main bathroom is large and features floor to ceiling tiles. Features you'll love:

- 2.7m ceilings downstairs
- Modern designed kitchen with stone bench tops, stainless steel appliances and ample storage
- LED downlights, stylish pendant lighting
- Delightful light and bright décor
- Double glazed windows and doors downstairs
- Balcony to the main bedroom
- Stylish master bedroom ensuite with walk-in shower and vanity with stone top
- Expansive light-filled open plan living integrating effortlessly to undercover outdoor entertaining area
- Second & Third bedroom with built-in robe on upper-level
- Ducted reverse cycle ducted air conditioning
- Secure double lockup garage with panel lift door and internal access
- Landscaped and generous low maintenance grounds
- 15 Minutes to Adelaide CBD
- Close to Thorndon Park & Linear Park
- Close to Morialta Conservation Park & Black Hill Conservation Park
- Paradise Interchange near by

Entertain your friends and family in the open plan living area which opens out to a shaded alfresco area, complete with a low maintenance, easy care garden. Ideal for young families, professionals, empty-nesters, first-time homebuyers, downsizers, while also offering an alluring investment opportunity. Everything is close by, including local stores, bus and train routes, schools, and kindergartens. Be sure to place an offer today as a home this special will not be on the market for long. Disclaimer: Every care has been taken to verify the correctness of all details used in this advertisement. However, no warranty or representation is given or made as to the correctness of information supplied and neither the owners nor their agent can accept responsibility for errors or omissions. RLA: 327058