

1A Wisteria Grove, Norlane, Vic 3214



Unit For Sale

Saturday, 24 February 2024

1A Wisteria Grove, Norlane, Vic 3214

Bedrooms: 2

Bathrooms: 1

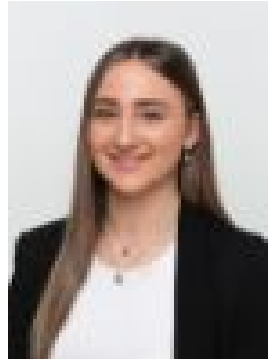
Parkings: 2

Area: 204 m2

Type: Unit



Chari Emirzade
0352280622



Chanelle Morrison
0429221913

\$460,000 - \$500,000

Welcome to your ideal abode! Nestled in the heart of convenience, this charming 2-bedroom, 1-bathroom home stands proudly on its own title, free from the constraints of body corporates. Here, you'll discover the epitome of modern living, where comfort, accessibility, & style converge seamlessly. Step inside & be greeted by an ambiance of warmth & tranquility. The home offers you two spacious bedrooms at the forefront of the home all serviced by a central bathroom, separate toilet & laundry. The laundry has direct access to a single car garage. As you walk further through you will be met with an open plan living. The kitchen offers you plenty of space & storage to cook & prepare your favourite meals for your loved ones, whilst the open plan living element allows you to still be connected with your family & friends. Outside, a private courtyard awaits, beckoning you to bask in the sunshine or savour alfresco dining under the stars. With minimal maintenance required, this outdoor oasis offers the perfect balance of relaxation & convenience. Situated in a prime location, this home boasts proximity to all major & local amenities, everything you need is just moments away. Commuting is a breeze, with easy access to public transportation, the Spirit of Tasmania which now docks at our shores & easy access to the Princes Highway for commuters to Melbourne in 50 minutes or Geelong CBD in 10 minutes ensuring that you're always connected to the pulse of the city. Key features:- Low maintenance living - Own title & NO body corporate fees- Close to all major & local amenities - Easy access to the Princes Highway for commuters to Melbourne in 50 minutes & Geelong CBD in 10 minutes.