

1B Evelyn Street, Pascoe Vale, Vic 3044

Sold Townhouse

Monday, 14 August 2023

1B Evelyn Street, Pascoe Vale, Vic 3044

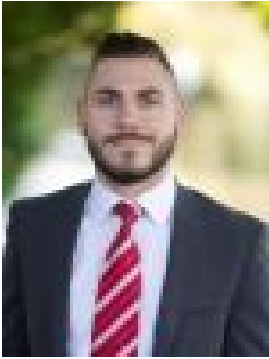
Bedrooms: 3

Bathrooms: 1

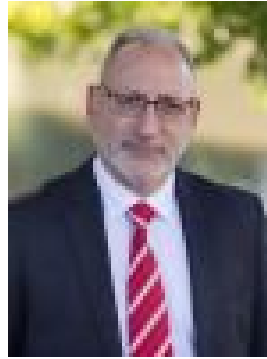
Parkings: 2

Area: 173 m2

Type: Townhouse



Daniel Imbesi
0393060422



Mark Imbesi
0418345097

\$832,000

Fixed Date Sale Closing Saturday 5th August at 1pm Discover the essence of space and elegance in this impressive townhouse, one of three high-quality homes nestled in one of Pascoe Vale's most sought-after streets. With its modern aesthetic that seamlessly blends with any decor, and a two-car garage catering to car enthusiasts, this property offers a truly exceptional living experience. Step through the formal entry and be greeted by a generously proportioned living room featuring a beautiful bay window, perfectly complemented by a spacious dining area and a timber veneer kitchen boasting stone benchtops. From here, access the courtyard with a pergola, creating an inviting outdoor space. Upstairs, three generously sized bedrooms await, with the main bedroom featuring a walk-in robe and the others equipped with built-in robes. The stunning central bathroom completes the upper level. Convenience is key with a bus service conveniently located on Derby Street and Gaffney Street, providing easy access to local cafes, schools, shops, reserves, and more. This premier location offers the ideal combination of tranquillity and accessibility.

PROPERTY SPECIFICATIONS:

- Three generously sized bedrooms with recently replaced carpets, featuring a walk-in robe in the main bedroom and built-in robes in the others
- Tastefully designed kitchen with 20mm stone benchtops, breakfast bench, pantry, 600mm stainless steel appliances including a 4-burner gas cooktop, oven, rangehood, dishwasher, double stainless steel sink, and tiled splashback
- Tiled dining area leading to the private paved courtyard
- The large east-facing living room boasts beautiful natural hardwood polished timber floors and a bay window
- Centrally located bathroom upstairs offering a bathtub, shower, large timber veneer vanity cabinet with a 20mm stone benchtop, and mirror
- Very low maintenance pattern paved concrete outdoor area complete with a covered pergola, creating an ideal entertaining space
- Side-by-side two-car brick garage with remote entry and internal access
- Additional features include freshly painted interiors, new door handles, door stops, power points and light switches, alarm system, intercom, gas ducted heating, evaporative cooling, linen closet, under-staircase storage, large garden shed, and more!

LOCATION BENEFITS:

- Moments away from bus services on Derby and Gaffney Street, providing convenient transportation to Glenroy and Eltham
- Close proximity to local shopping centres, schools, and reserves
- Approximately 10km north of the CBD, Pascoe Vale offers excellent Citylink and airport access

Don't miss this opportunity to secure a spacious and meticulously designed townhouse in a highly sought-after location. Arrange a viewing today and experience the epitome of comfortable and convenient living in Pascoe Vale.