

1B Paradise Avenue, Avalon Beach, NSW 2107

House For Sale

Saturday, 11 November 2023



1B Paradise Avenue, Avalon Beach, NSW 2107

Bedrooms: 4

Bathrooms: 2

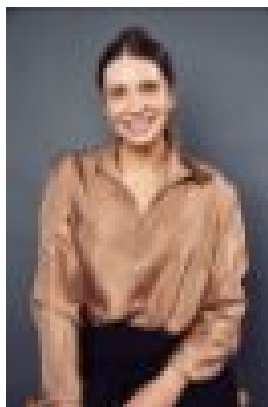
Parkings: 3

Area: 917 m2

Type: House



Stephanie Hammond
0283557955



Rose Warburton
0283557955

Auction

Auction: Saturday 9 December, onsite With enormous charm and generous proportions, this much loved family home has been designed to suit its unique position, overlooking one of Pittwater's most spectacular inlets, Paradise Beach. Sitting on the high side of one of the area's most sought after cul-de-sacs, this characterful house is just footsteps to the beautiful netted sea pool and sand at Paradise Beach, and an easy stroll to Hilltop shops, Avalon village and the beach. This is a rare offering in one of Clareville's most exclusive enclaves. Designed to ensure every room enjoys a Pittwater view, the home exudes such a warm ambiance. It's unique design, with highlights and features that include timber exteriors, polished hardwood floors, high pitched ceilings and exposed beams. There are glass sliding doors that bring the inside out and the outside in...all just perfect for life on Pittwater. There are grassy lawns, lush garden beds and spectacular sandstone features. Combined, there's an altogether compelling connection to the surrounding landscape and views. The floorplan is well thought-out and flexible. There's a luxurious lounge room with a wonderful fireplace and access to the rear garden and a wide covered front verandah - that cleverly acts as a living linkway, between the pitched pavilions. There are two master bedrooms - one at either end of the verandah, both with soaring ceilings and exposed beams. The other two bedrooms on the lower levels are charming too. One is particularly versatile; it's an ideal guest bedroom or a perfect rumpus/TV room. It is ideally positioned at the entry level to the house, with its own bathroom across the landing, and covered private entry. There's a gorgeous, chef's kitchen with stainless and timber bench-tops and European appliances with wrap-around intimate Pittwater views. There's off street parking for several cars as well as dedicated undercover parking at the house, and two garden sheds/large storage rooms on the block. This is a classic coastal entertainer, designed to showcase all that life on Pittwater has to offer.