

**1B Tintern Avenue, Bayswater North, Vic 3153**



**House For Sale**

Wednesday, 6 December 2023

**1B Tintern Avenue, Bayswater North, Vic 3153**

**Bedrooms: 3**

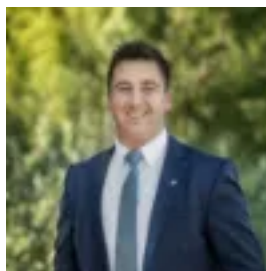
**Bathrooms: 2**

**Parkings: 2**

**Type: House**



Ash Thompson  
0398706211



Alan Hodges  
0398706211

**\$750,000 - \$825,000**

Framed by a stylish rendered façade and set just a short stroll from leafy Taralla Creek Trail, buses and Tinternvale Primary School, this contemporary townhouse presents effortlessly low maintenance interiors across an airy open layout. Positioned within walking distance of Gracedale Park and Tintern Grammar, the home is also moments from Eastfield Park, Ringwood East Station, Croydon shopping and Eastland Shopping Centre. On the main floor, an expansive open plan living and dining area offers plenty of space for relaxed family living, with bifold doors leading out to a generous timber deck and pergola. Adjacent, the yard includes a lawn area and an inbuilt sandpit with bench seating, ideal for children's play. An impressive contemporary kitchen comprises stone waterfall benchtops, an island breakfast bar, chic mirror splashbacks, ample cabinetry, and stainless steel appliances including a dishwasher, an electric oven and a gas cooktop. On the carpeted upper level, three bedrooms include a large master with feature pendant lighting, a large walk-in wardrobe, and a bright private ensuite with a waterfall shower and stone vanity. The central family bathroom offers a waterfall shower, a separate bathtub and a stone vanity, while the ground floor includes an additional guest powder room plus a full laundry. Featuring sleek tiled flooring, split system air conditioning / heating, an alarm system, roller blinds with privacy sheers, good inbuilt storage and a lock-up garden shed, the home also includes a remote double lock-up garage with internal access.