

**1D Esme St, Tamborine Mountain, Qld 4272**



**House For Sale**

Wednesday, 17 January 2024

1D Esme St, Tamborine Mountain, Qld 4272

**Bedrooms: 2**

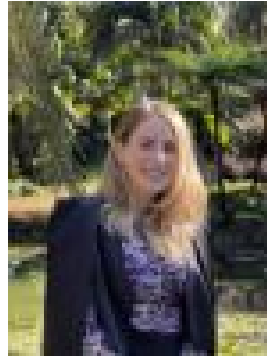
**Bathrooms: 1**

**Area: 1 m2**

**Type: House**



Emma Hawker



Fiona Espulso  
0419223888

## Offers Over \$1,725,000

What a great block of land to build your dream home, located close to all the Mountain has to offer, its flat by Mountain standards, beautiful rich red soil and lots of infrastructure in place to save you a fortune in time and money... Bore, fences, waste water system and the best bit... you can live onsite or keep renting the shed house that is already constructed onsite, it's a win win! • Almost 5 acres of very gently sloping land • Majority is within a fully fenced area • Small forest area with summer creek at the bottom of the property • Great sized shed house, fully fitted with wet-bar, bathroom, 2 bedrooms, lounge dining and loft office • Storage area to the front of the shed house with enough room for a car at an angle • Driveway and parking area to the front of the shed house • HSTP septic system for a large dwelling already onsite • Bore and pump already installed • 45,000 Litres of water storage • Great tenant in place, lease ends in February paying \$650 per week • Outdoor playcentre Land is so rare on Tamborine Mountain, one with this amount of infrastructure in place and with this location just a stones throw to Wineries, Distillery, Sports Grounds and a short hop to schools, shops and wineries is a real find, this property will be snapped up so don't delay in booking an inspection. We have a tenant in place so we do need some notice please. Talk soon!! Disclaimer: We have in preparing this advertisement used our best endeavours to ensure the information contained is true and accurate, but accept no responsibility and disclaim all liability in respect to any errors, omissions, inaccuracies or misstatements that may occur. Prospective purchasers should make their own enquiries to verify the information.