

2/1 Banool Quadrant, Doncaster East, Vic 3109



Townhouse For Sale

Thursday, 13 June 2024

2/1 Banool Quadrant, Doncaster East, Vic 3109

Bedrooms: 3

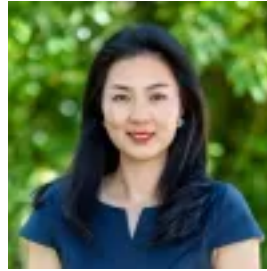
Bathrooms: 2

Parkings: 2

Type: Townhouse



Cherie Sun
0398898800



Ripple Wu
0398898800

\$890,000 - \$978,000

This architecturally designed townhouse showcases modern style and top-notch quality. Luxury touches such as high square-set ceilings, wide timber floors, and an abundance of natural sunlight create a sophisticated atmosphere throughout. The central focus of the interior is the open-plan living and dining room, which flows to a balcony for social occasions and everyday relaxation. The stylish kitchen is a home chef's delight, equipped with premium stainless-steel appliances and sleek stone benchtops. The ground floor features a convenient ensuite bedroom, offering flexibility and privacy. The top floor houses two more bedrooms; one with a built-in robe and direct access to a chic semi-ensuite bathroom, and the other with a walk-in robe. A home office area with a fitted desk completes this level, providing a quiet space for work or study. Ideal for young families, busy professionals, and savvy investors, the home also includes split-system heating and cooling, a European laundry, and a double garage with internal access and new Epoxy flooring. Located in the highly sought-after Donburn Primary School and East Doncaster Secondary College zones, this residence is a 1-minute walk to the city bus stop and close to Donburn Shops, Devon Plaza, Tunstall Square, Westfield Doncaster, The Pines Shopping Centre, Zerbes Reserve, and Ruffey Lake Park. Enjoy the perfect blend of comfort, style, and convenience in this fantastic home.

- Architecturally designed townhouse - High square-set ceilings and wide timber floors - Open-plan living and dining with balcony access - Stylish kitchen with premium stainless-steel appliances - Ground floor ensuite bedroom for privacy and flexibility - Two top-floor bedrooms, semi-ensuite bathroom - Home office area with fitted desk - Split-system heating and cooling, European laundry - Double garage with internal access and Epoxy flooring