

2/1 Fairway Avenue, Southport, Qld 4215

Coastal

House For Sale

Thursday, 13 June 2024

2/1 Fairway Avenue, Southport, Qld 4215

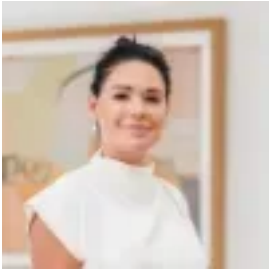
Bedrooms: 3

Bathrooms: 2

Parkings: 2

Area: 148 m2

Type: House



Georgia Tritton
0755266999

Offers Over \$1,200,000

Step into this stylish & bespoke duplex, nestled in a highly desirable pocket of Southport, bordering on Bundall, walking distance to HOTA (Home Of The Arts), the farmers markets, Chevron Island and all its bars & eateries, Surfers Paradise, the beach and so much more. Upon arrival, you'll be welcomed by an expansive open-plan living area adorned with high ceilings and abundant space. Thoughtfully designed to exude comfort and contemporary elegance, this living space boasts stylish accents throughout. Ascend the stairs to discover three generously proportioned bedrooms, each boasting air conditioning and convenient built-in robes. The master suite stands out with its remarkable spaciousness and a luxurious ensuite, offering an oasis of tranquility. For those who relish the art of entertaining, this property is tailor-made for you. The airy living area seamlessly flows into the outdoor entertaining space, extending to the deck and pool area. Whether you're hosting a lively BBQ or simply unwinding by the poolside, this property epitomizes the seamless integration of indoor and outdoor living, perfect for both relaxation and social gatherings. Property Features: • Three spacious bedrooms • Two large bathrooms including en-suite in master bedroom • Powder room downstairs • High ceilings and open plan living creating an ambiance of space • New appliances throughout the kitchen • Sizeable pool and outdoor entertaining area • Double car port with side access • Highly sought after residential pocket • Sparking in-ground pool with pool solar heater • Fully fenced yard • Mirco cement floors throughout the home • Large water tank • Large garden shed • No body corporate POI • Ferry Road Markets - 2.2km • Brickworks Shopping Centre - 2.2km • Australia Fair Shopping Centre - 4.2km • Chirn Park - 5.6km • Queens Street Village - 3.3km • Chevron Island - 1.2km • Surfers Paradise - 2.3km • Southport CBD - 7.3km • Griffith University - 7.5km • Gold Coast University Hospital - 7.5km • Home Of The Arts - 1.4km • Broadwater Parklands - 4.3km • The Southport School (TSS) - 1.8km • Southport High School - 5.7km • Keebra Park State School - 3.6km • St Hilda's School - 3.4km • Pacific Fair Shopping Centre - 6.7km Disclaimer: We have in preparing this information used our best endeavours to ensure that the information contained herein is true and accurate but accept no responsibility and disclaim all liability in respect of any errors, omissions, inaccuracies or misstatements that may occur. Prospective purchasers should make their own enquiries to verify the information contained herein.