

# 2/1 Grimwade Court, Epping, Vic 3076



## Townhouse For Rent

Friday, 26 April 2024

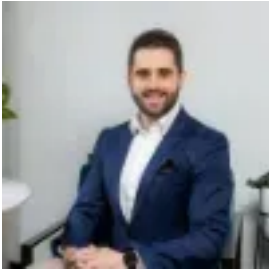
2/1 Grimwade Court, Epping, Vic 3076

**Bedrooms: 3**

**Bathrooms: 1**

**Parkings: 2**

**Type: Townhouse**



James Voltscos  
0394892233

**\$520pw /\$2260pcm**

Nestled in the serene enclave this charming three-bedroom townhouse presents a splendid opportunity for young families, couples, and singles alike to secure a piece of Epping's tranquillity. This home is a testament to comfortable living within a bustling suburban context, a mere stone's throw away from essential amenities and community hubs. Spread across 138 square metres, this residence boasts an intuitive layout designed for ease of living and entertaining. The ground level welcomes you with a cosy lounge room that flows seamlessly into a well-appointed kitchen with an adjoining meals area, creating a homely atmosphere for family dinners and casual gatherings. Upstairs, three generously sized bedrooms await, each offering a peaceful retreat from the hustle and bustle of daily life. The central bathroom caters to the needs of a busy household. Polished floorboards throughout the home add a touch of elegance, and ducted heating ensures comfort during the cooler months. Outdoor living is not forgotten, with a charming courtyard that beckons for alfresco dining and leisurely weekend activities. Practicality is epitomised with a double garage, featuring rear access for added security and ease of parking. Location is paramount, and this home does not disappoint. It sits comfortably close to the bustling Westfield Shopping Centre and Pacific Epping, ensuring all your shopping needs are well within reach. The Northern Hospital, various bus services, and a selection of schools are also conveniently nearby, cementing this property as a prime choice for those seeking a balanced lifestyle. Do not miss your chance to experience the epitome of Epping living in this delightful townhouse, where comfort meets convenience in a most harmonious way.