

2/1 Tasman Avenue, Nunawading, Vic 3131



Townhouse For Sale

Wednesday, 12 June 2024

2/1 Tasman Avenue, Nunawading, Vic 3131

Bedrooms: 3

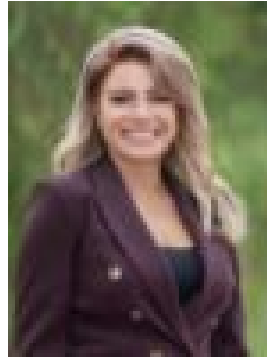
Bathrooms: 2

Parkings: 2

Type: Townhouse



Charles Shi
0423633253



Christine Bafas
0427835610

\$830,000 - \$880,000

Generous and secure single level home in tranquil neighbourhood Peacefully set towards the rear in a block of just three homes, this spacious single level unit offers an enticingly low maintenance lifestyle ideal for young families, first homebuyers and downsizers alike. Featuring gleaming stainless steel appliances, polished bamboo floors and a sunny private garden with a spacious timber deck, the home enjoys an enviable location offering both walkability and tranquillity. Set mere metres from Koonung Creek Trail, and within easy walking distance of Toast Café, Whitehorse Primary School and RE Gray Reserve, the home is also just moments from EastLink, buses, Mullauna Secondary College and The Peddler Café. Nunawading Station is a few minutes' drive away, while Tunstall Square shopping, Blackburn Square and Mitcham restaurants are all within easy reach. An open plan living and dining area flows directly to a sundrenched deck ideal for alfresco entertaining. Adjacent, a quality artificial lawn is bordered by low maintenance leafy gardens, offering a secure outdoor space for kids or pets. The generously proportioned modern kitchen includes extensive cabinetry with a large corner pantry, a breakfast bar, and a stainless steel oven, gas cooktop and Bosch dishwasher. A substantial master bedroom features a walk-in wardrobe and a spacious private ensuite, while two additional bedrooms are each equipped with built-in wardrobes. An impressively sized central bathroom includes an oversized vanity, a separate bathtub and a separate W/C, and is complemented by a skylit laundry with good storage. Featuring airy high ceilings, bamboo flooring, ducted heating, split system air conditioning and heating, LED downlights, roller blinds with privacy sheers, a security screen door and a full laundry, the home also includes a remote double lock-up garage with direct access via the courtyard.